

EPILEPSY12

Results at a glance: Update

RCPCHAudits

Below are results from the Epilepsy12 'cohort 6' (2025 publication) and 'cohort 7' (2026 publication) Clinical Audit, focusing on the 10 Key Performance Indicators (KPIs) to describe the first year of care for children and young people with a new diagnosis of epilepsy in England and Wales. For more information, please visit [our website](#) (or use the QR code to the right)*.



Involvement of appropriate professionals

KPI 1 Children and young people seen by a **consultant paediatrician with expertise in epilepsies** within two weeks from first paediatric assessment.

Cohort 6 **32.4%**

Cohort 7 **31.1%**



KPI 2 Children and young people seen by an **epilepsy specialist nurse (ESN)** within the first year of care.

Cohort 6 **85.6%**

Cohort 7 **88.1%**



KPI 3a Children and young people meeting defined criteria for **tertiary input**, who received input from a paediatric neurologist or a referral to Children's Epilepsy Surgery Service (CESS) within the first year of care.

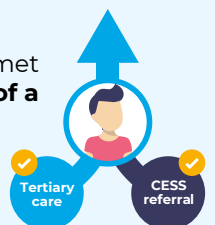
Cohort 6 **49.2%**

Cohort 7 **47.8%**

KPI 3b Children and young people who met CESS referral criteria who had **evidence of a CESS referral**.

Cohort 6 **42%**

Cohort 7 **39.1%**



Appropriate assessment

KPI 4 Children and young people with convulsive seizures who had an **ECG** within the first year of care.

Cohort 6 **83.4%**

Cohort 7 **85.1%**



KPI 5 Children and young people with defined indications for an MRI who had an **MRI within 6 weeks of request**.

Cohort 6 **49.2%**

Cohort 7 **46.4%**



Mental health

KPI 6 Children and young people with documented evidence that they had been **asked about mental health**.

Cohort 6 **38.2%**

Cohort 7 **40.3%**



KPI 7 Children and young people with a mental health problem who had evidence of receiving **mental health support** within the first year of care.

Cohort 6 **76.6%**

Cohort 7 **79.1%**



Care Planning

KPI 8 Females on Valproate treatment and females 12 years and over on Topiramate treatment, with **risk acknowledgement forms** completed. *new measure

Cohort 7 **89.6%**



KPI 9a Children and young people who had evidence of **care planning agreement** within the first year of care.

Cohort 6 **85.8%**

Cohort 7 **88.1%**

KPI 9b Children and young people who had documented evidence of communication regarding **core components of care planning**.

Cohort 6 **67.4%**

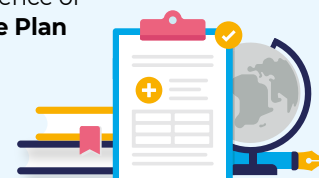
Cohort 7 **71.3%**



KPI 10 Children and young people aged 5 years and above who had evidence of a **School Individual Health Care Plan** within first year of care.

Cohort 6 **67.2%**

Cohort 7 **75.3%**



*To minimise risk of disclosure, children and young people from Jersey have not been included in the cohort 7 annual analysis, including the key performance indicator calculations displayed here.