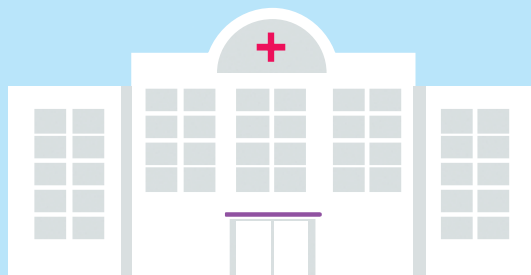


Report at a glance

10,242

hospital admissions for adults with asthma attacks



170

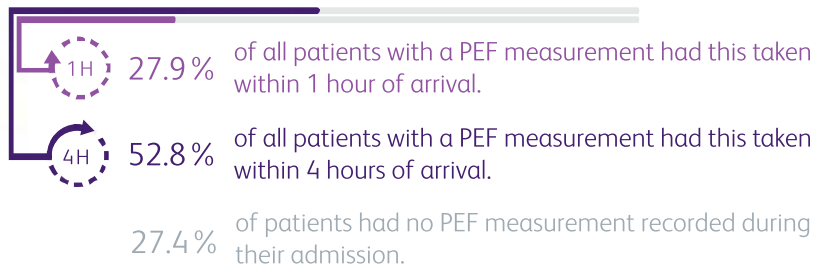
hospitals in England, Scotland and Wales

PEF

QI priority: Ensure 90% of patients are assessed for asthma severity, including measurement of PEF, within 1 hour of arrival to hospital.



72.6% of patients had a PEF measurement recorded during their hospital admission. Guidelines require measurement of PEF as part of severity assessment.*



*3.9% of patients were too unwell to have PEF taken following arrival at hospital.

Respiratory review

QI priority: Ensure 90% of patients receive a respiratory specialist review before discharge from hospital.



76.8% of patients were reviewed by a respiratory specialist during their admission.



Systemic steroids

QI priority: Ensure 95% of patients who have not been administered systemic steroids as part of pre-hospital care are administered this treatment within 1 hour of arrival to hospital.*



87.7% of patients were administered systemic steroids following arrival at hospital.*



*Please note that the audit dataset did not collect data on the proportion of patients that received their first dose of systemic steroids prior to arrival at hospital in this round of reporting (see section 4 on acute treatment for further information).

