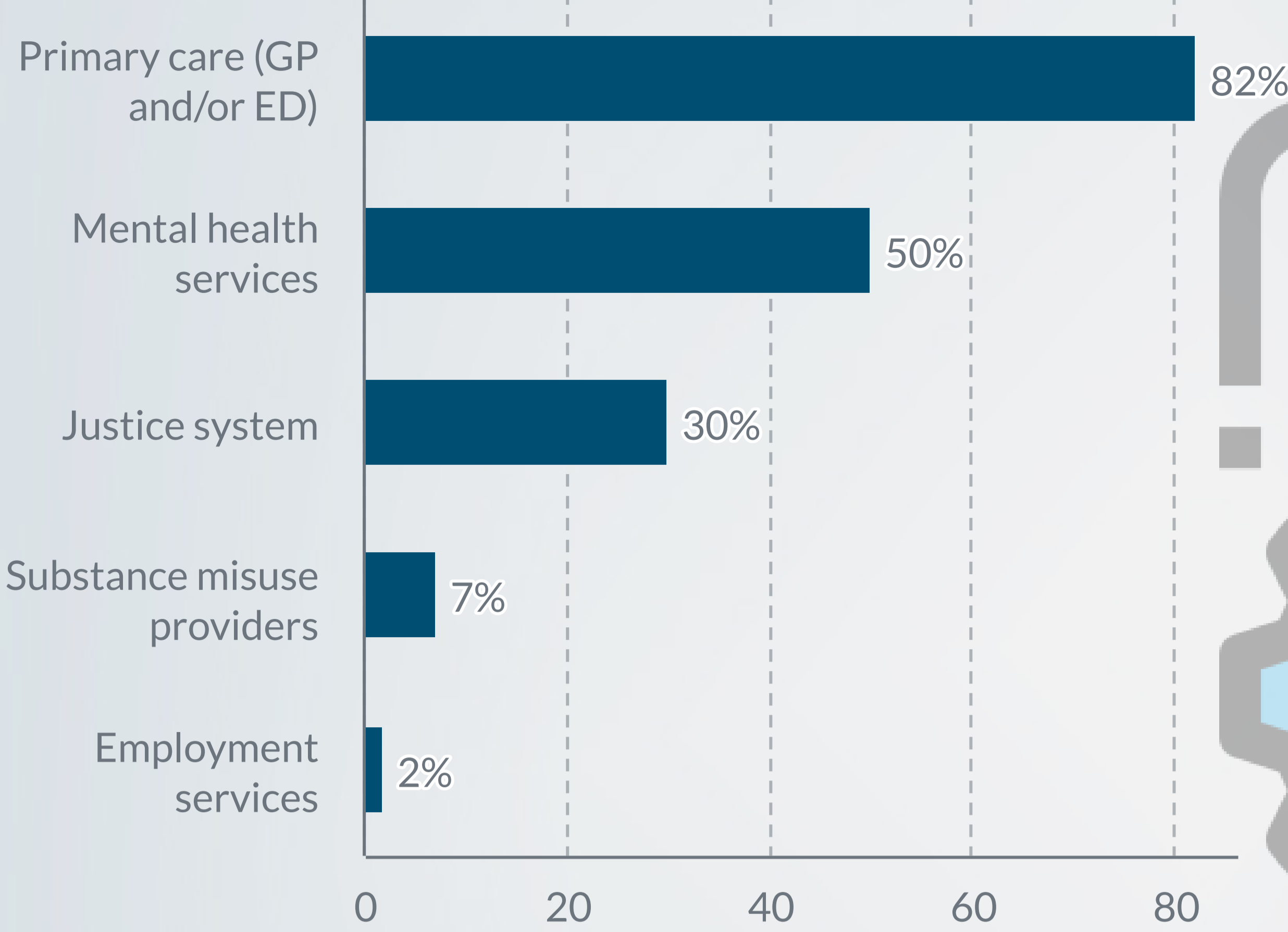


91%

had service contact



Services need to recognise risk;

know how to respond to men's needs;

and work together.



Higher rates of key risk factors



66%

Mental health diagnosis



52%

Physical health condition



49%

Alcohol and drug misuse



34%

Bereavement



11%

Suicide-related internet use

57% experienced economic adversity

Recent adverse life events experienced by many



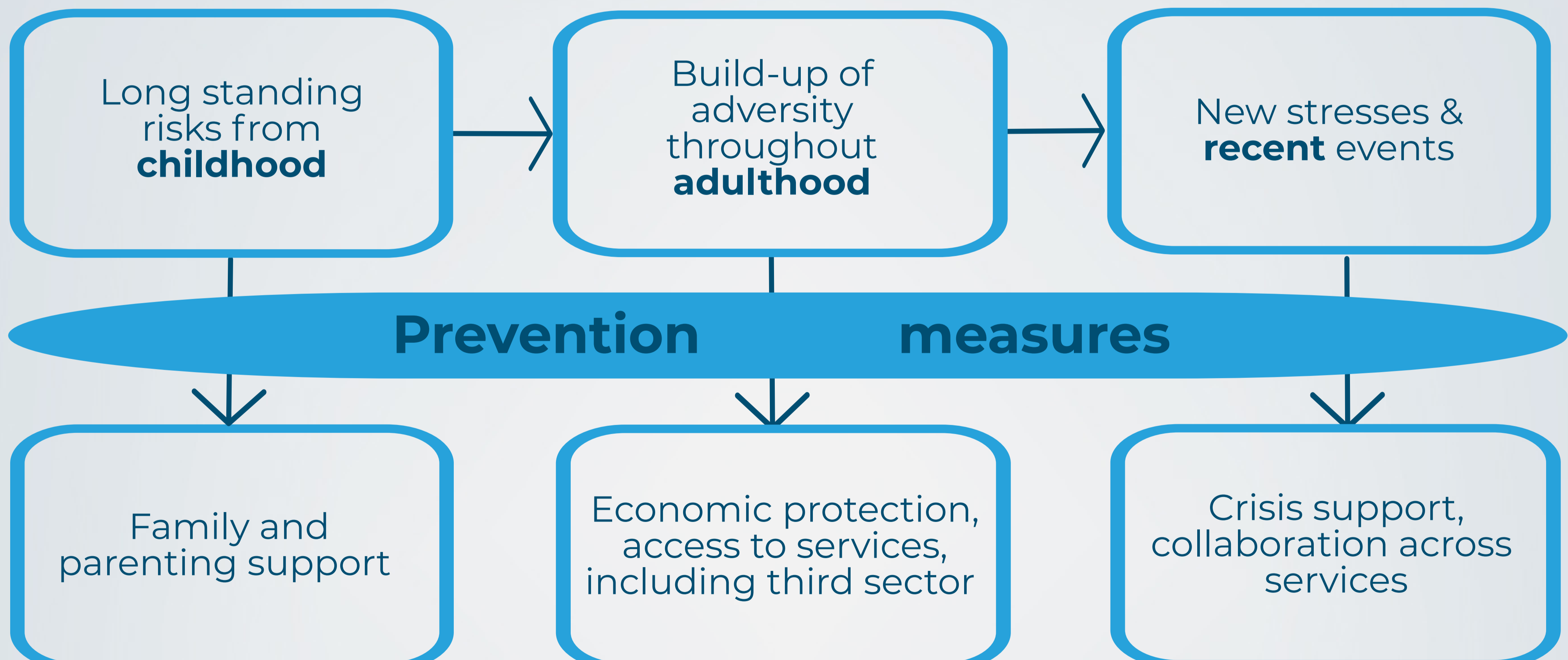
Unemployment, financial or housing problems common



Relationship break-up, problems at work, social isolation

National Confidential Inquiry into Suicide and Safety in Mental Health (2021)

Cumulative risk



Opportunities for prevention



Adapt interventions to suit men's needs



Safer prescribing in accordance with national guidelines



Recognise risks after self-harm



Bereavement support tailored to men



Improved online safety in line with current initiatives