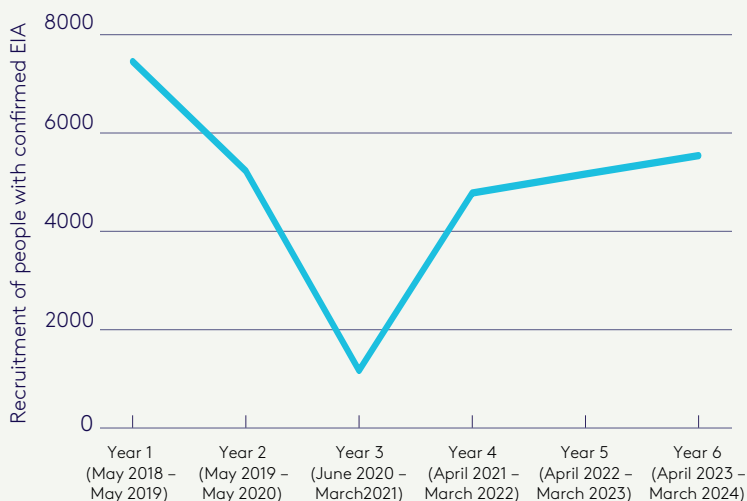


## State of the Nation Summary Report 2024 Infographic

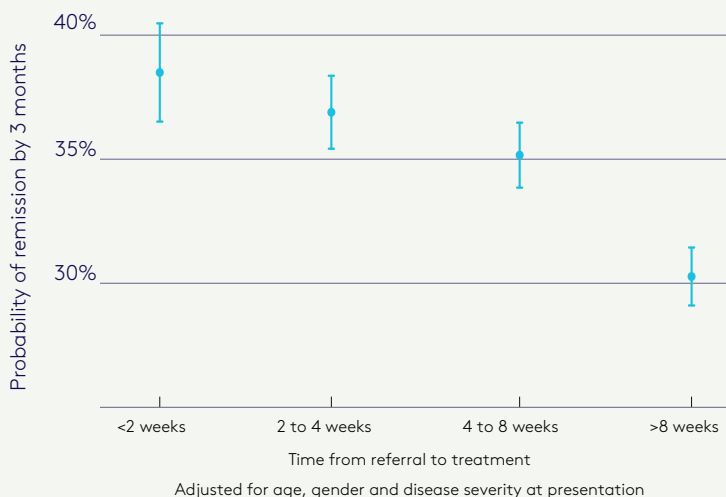
### Recruitment rates continue to improve post-pandemic 86% of eligible units entered some data in year six.



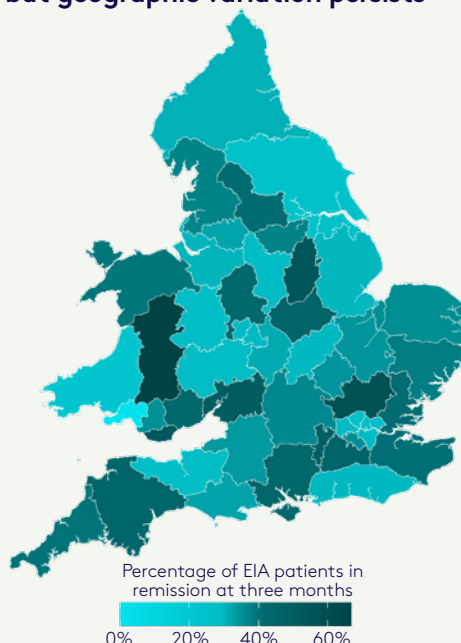
### Treatment timeliness for early inflammatory arthritis has improved



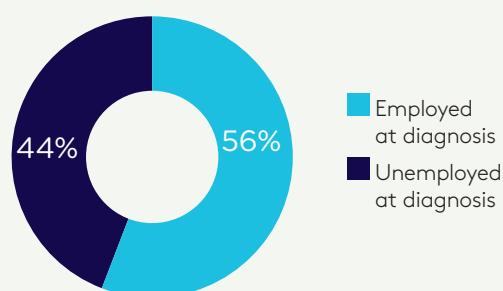
### Relationship between remission rates and treatment timeliness



### Remission rates remain stable at 35% but geographic variation persists



### Most early inflammatory arthritis patients report that their symptoms significantly impact their employment

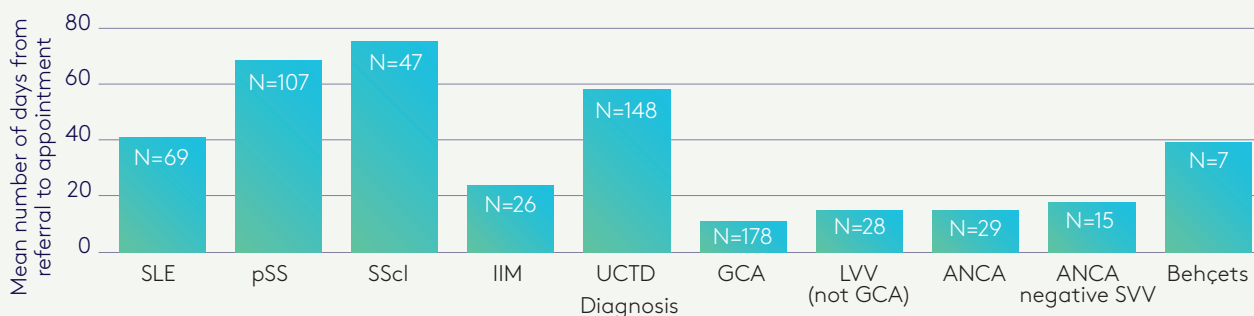


 **75%**  
of those who were unemployed at diagnosis said this was due to their arthritis

 **20%**  
of those who were employed at diagnosis said they had to change their work after diagnosis

## State of the Nation Summary Report 2024 Infographic

Waiting times for Rare Autoimmune Rheumatic Diseases are highly variable (see list of diagnoses)



### Diagnosis

SLE	Systemic lupus erythematosus
pSS	Primary Sjögren's syndrome
SScl	Systemic sclerosis
IIM	Idiopathic inflammatory myopathies
UCTD	Undifferentiated/other connective tissue disease or overlap syndrome
GCA	Giant cell arteritis
LVV (not GCA)	Large vessel vasculitides (not giant cell arteritis)
ANCA	ANCA-associated vasculitis
ANCA negative SVV	Other small/medium vessel vasculitides (ANCA-negative)
Behçets	Behçet's syndrome

### Recommendations

1

Royal College of Physicians:

**Ensure consultant job plan guidance includes allocated time for triage and pre-referral specialist advice.**

2

Integrated Care Boards and Welsh Health Boards:

**Ensure commissioned rheumatology services include protected EIA clinics.**

3

British Society for Rheumatology:

**Produce a national guideline recommending that people living with EIA are offered a DMARD on the day of their diagnosis.**

4

Care Quality Commission and Health Inspectorate Wales:

**Improve regulatory oversight of individual healthcare providers by utilising routine NEIAA data to assess standards of care and ensure compliance with quality standards.**

5

Department for Works and Pensions, Department of Health and Social Care, NHS England and Welsh Health Boards:

**Improve timely access to employment and mental health support programmes for people living with EIA.**