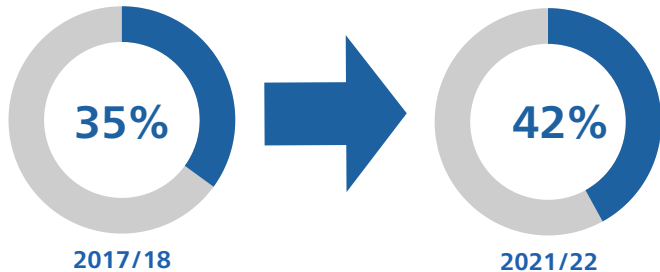
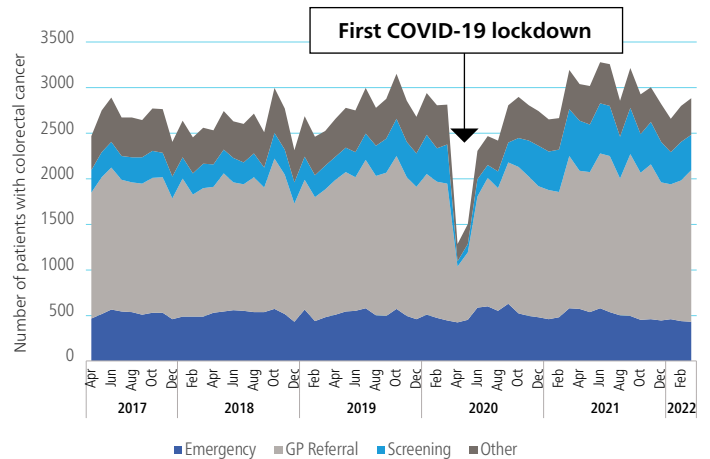


CARE PATHWAYS

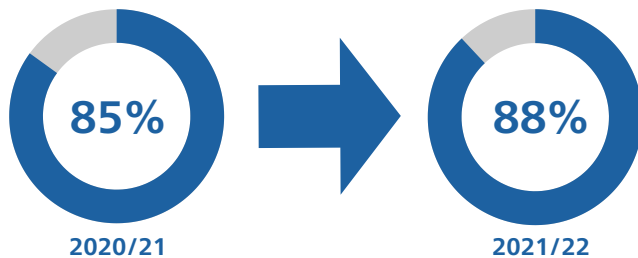
35,779 patients

were diagnosed with bowel cancer in England and Wales between 1 April 2021 and 31 March 2022.



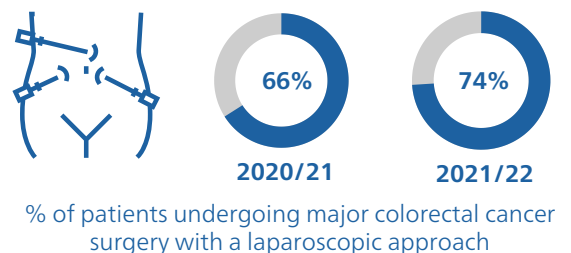
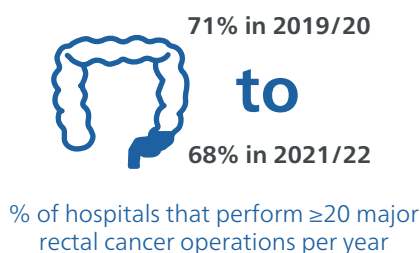
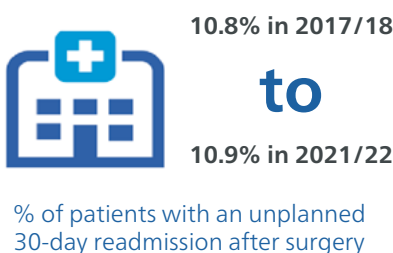
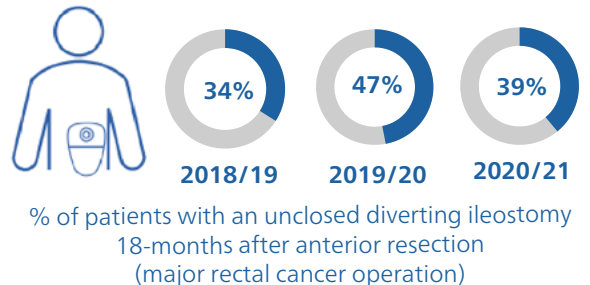
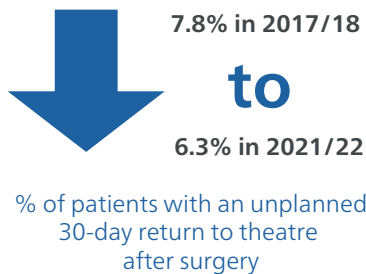
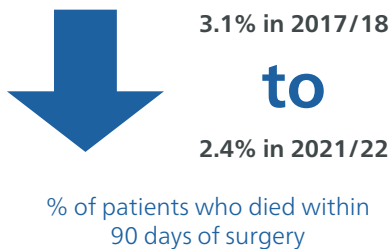
Increase in the proportion of patients presenting with stage I or II disease

Number of patients presenting with colorectal cancer returned to pre-pandemic levels



Increase in the proportion of patients seen by a clinical nurse specialist

PERI-OPERATIVE CARE



ONCOLOGICAL MANAGEMENT

