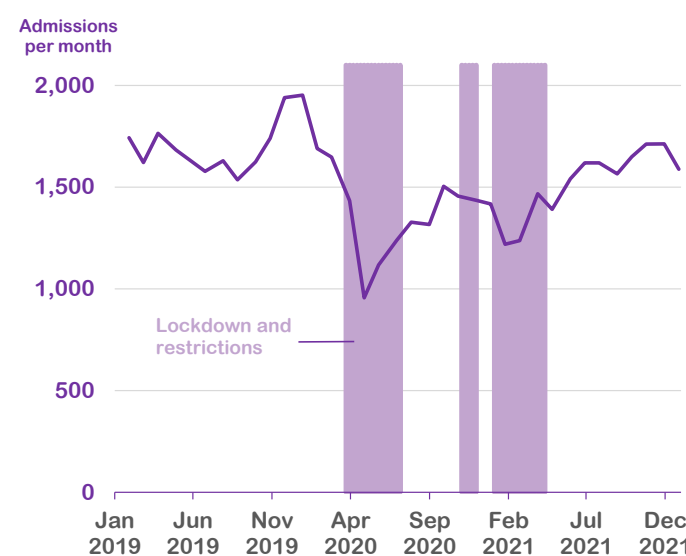
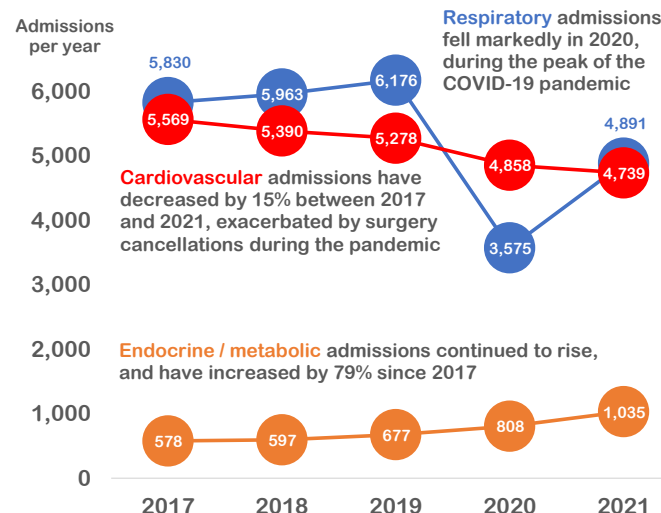


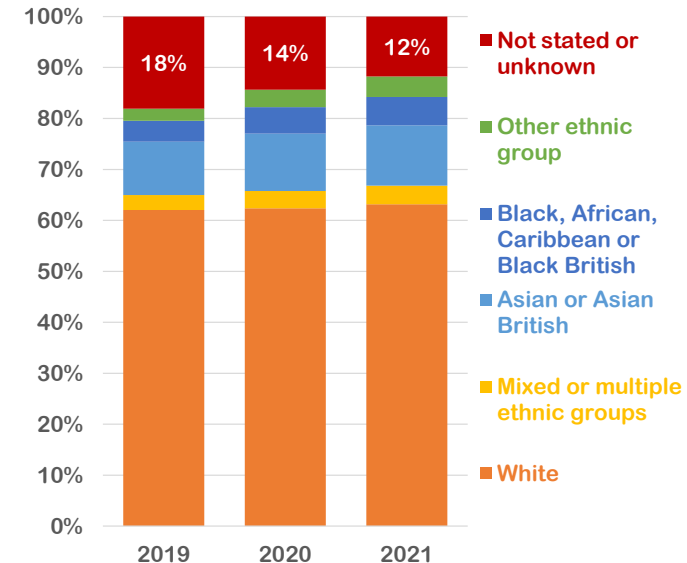
Following a sharp fall in 2020, admissions to PICU rose in 2021, but did not return to pre-pandemic levels



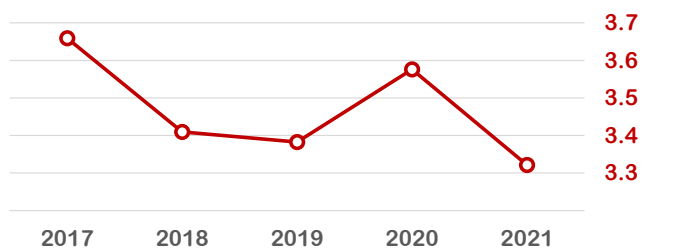
Respiratory admissions reversed the drop seen in 2020, while endocrine / metabolic and cardiovascular diagnoses continued to rise and fall respectively



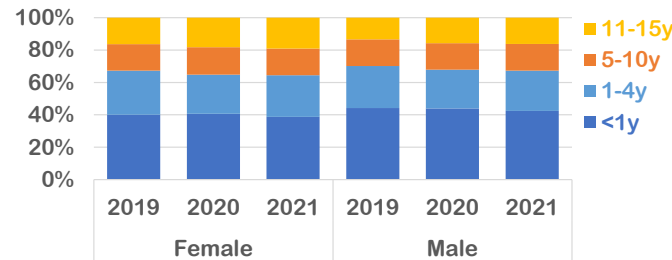
Completion of ethnic group continues to improve, but was still missing for around one-in-nine PICU admissions in 2021



PICU mortality continued to fall in 2021, following a rise in 2020 during the peak of the COVID-19 pandemic



Around two-thirds of all PICU admissions are children under 5 years old, with just over two-in-five under 1 year



Over half of PICU admissions in England and Wales in 2019-2021 were from the most deprived areas

