

National Vascular Registry SDM 03 02 22

Kim Rezel
Head of Patient and Carer Engagement



Background and context

- Contacts
 - The Circulation Foundation
 - Bristol Uni patient panel
 - British Heart Foundation
 - The Patients Association
- Questionnaire
- Individuals



What we asked about

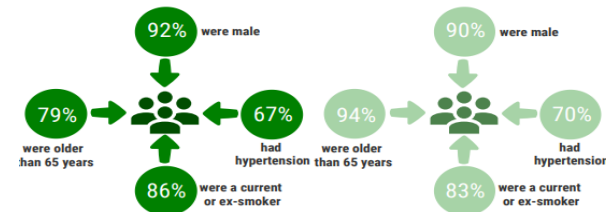
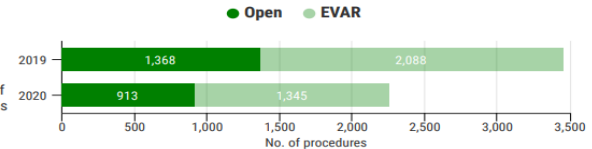
- Main concerns
- Greatest benefits
- Areas for improvement
- Resources

Repair of abdominal aortic aneurysm (AAA) to prevent rupture

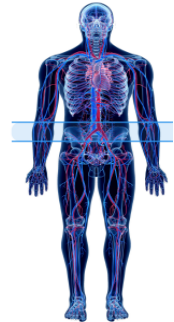
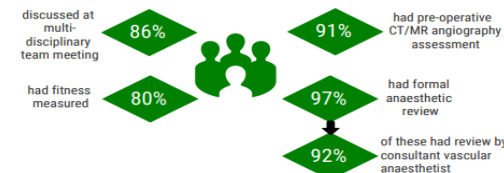
AAA is an abnormal expansion of the aorta (the largest vessel taking blood away from the heart). If left untreated, it may enlarge and rupture causing fatal internal bleeding. An infra-renal aneurysm occurs below the level of the renal (kidney) arteries within the aorta.

Impact of COVID-19

There were 2,258 elective infra-renal AAA repairs submitted to the NVR in 2020, which is a decrease of 35% on the 3,456 procedures in 2019.



How were patients assessed?



Glossary

The average is the median; "typical range" is the interquartile range.

Patient outcomes after surgery in 2020



Main areas of concern

- Getting through surgery
- Timescales
- Location of the surgery
- Survival rates
- Aftercare

Greatest benefit

- Consultant engagement
- Joined up working
- ICU staff
- Follow up appointments
- CT scans and ultrasounds

Areas for improvement

- Lack of carer updates
- Inaccurate discharge notes
- Follow up information
- Medication supply
- Aftercare
- Pre-admission information
- Vascular ward care
- Information about symptoms

- One page summaries
- Plain English descriptions
- Best practice information

Lower limb bypass for peripheral arterial disease to prevent limb loss

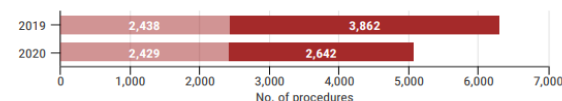
Peripheral arterial disease (PAD) is a restriction of the blood flow in the lower limb arteries that can severely affect a patient's quality of life, and risk their limb.

Open surgical (bypass) interventions become options when conservative therapies have proved to be ineffective.

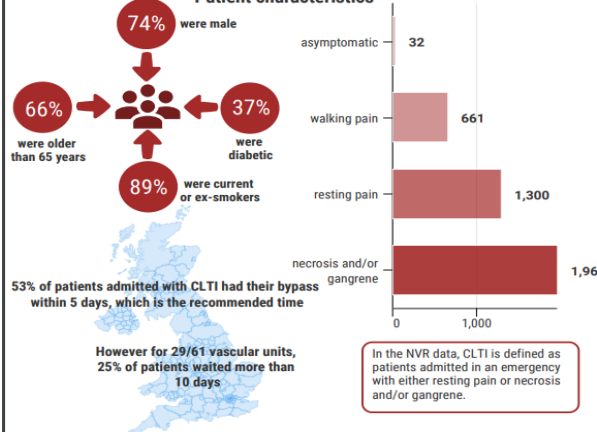
Impact of COVID-19

There were 5,071 lower limb bypass procedures carried out in 2020, which is a 20% reduction on the 6,300 procedures in 2019.

● Admitted in an emergency ● Admitted electively



Patient characteristics

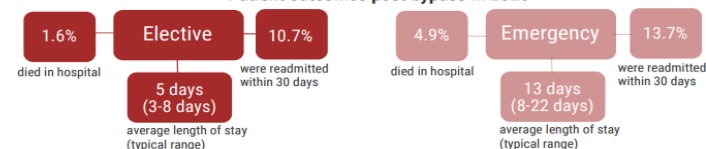


Glossary

The average is the median; "typical range" is the interquartile range.

Chronic limb-threatening ischaemia (CLTI) is the most severe form of PAD, where the blood flow to the legs becomes severely restricted.

Patient outcomes post bypass in 2020



Improvements

- More info on waiting times and targets in all areas
- Highlight the best practice section
- Disseminate to GP's
- More info on treatment process
- Glossary

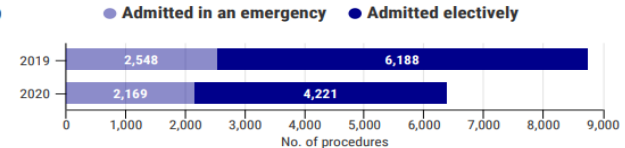
Lower limb angioplasty/stenting for peripheral arterial disease

Peripheral arterial disease (PAD) is a restriction of the blood flow in the lower limb arteries that can severely affect a patient's quality of life, and risk their limb.

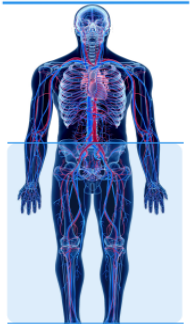
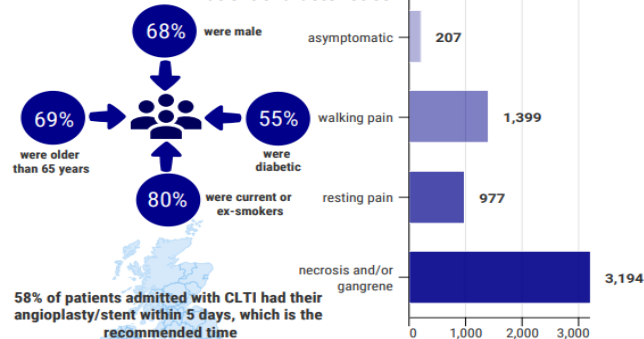
Endovascular interventions become options when conservative therapies have proved to be ineffective.

Impact of COVID-19

There were 6,390 lower limb angioplasty/stent procedures carried out in 2019, which is a 27% reduction on the 8,736 procedures in 2019.



Patient characteristics



Glossary

The average is the median; "typical range" is the interquartile range.

Chronic limb-threatening ischaemia (CLTI) is the most severe form of PAD, where the blood flow to the legs becomes severely restricted.

Patient outcomes post procedure in 2020



- Aftercare
- Covid-related impact
- Self-management information
- Communications