

Increase in general population suicide rate in 2018-19

1,675

suicides by people under recent (less than 12 months) mental health care in 2019

27%

of all people who died by **suicide** in 2009-2019 had **recent** contact with **mental health services**

Clinical risk

7,750

deaths per year in patients who lived **alone**



9% of patients died close to a **significant date**



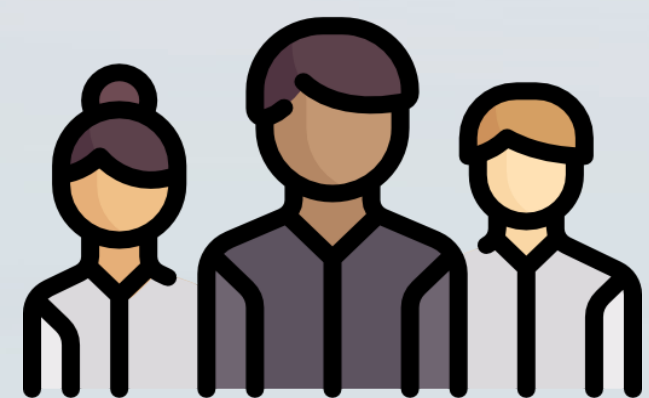
Clinical assessment should include recording **anniversaries and important dates**

Acute care

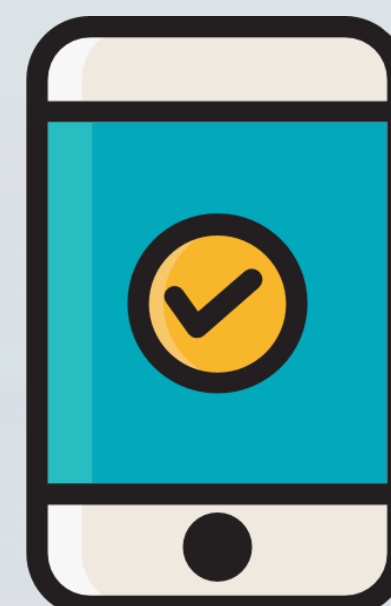
474

deaths per year in **acute care settings**

Half of in-patients on **agreed leave**



Highest risk shortly after **discharge**



Prevention should address **ward environment and follow-up within 72 hours**

Patients under 18

19 deaths per year



Contact with services lower than in older groups

Higher rates of self-harm than other age groups



Prevention should focus on access to services

Recent economic adversity

281 deaths per year

Mainly financial or workplace problems, homelessness



Often middle-aged men, unemployed, with alcohol or drug misuse

Services should work with agencies that support people facing economic problems

Physical illness

390 deaths per year

Often older people, living alone and having long-term illnesses



Self-poisoning common with prescribed opiates often used

Access to opioids at home should be assessed by services

Domestic violence

104 deaths per year

Mainly women but 28% were men



Personality disorder more common, potentially reflecting previous trauma

Suicide risk assessment should consider domestic violence