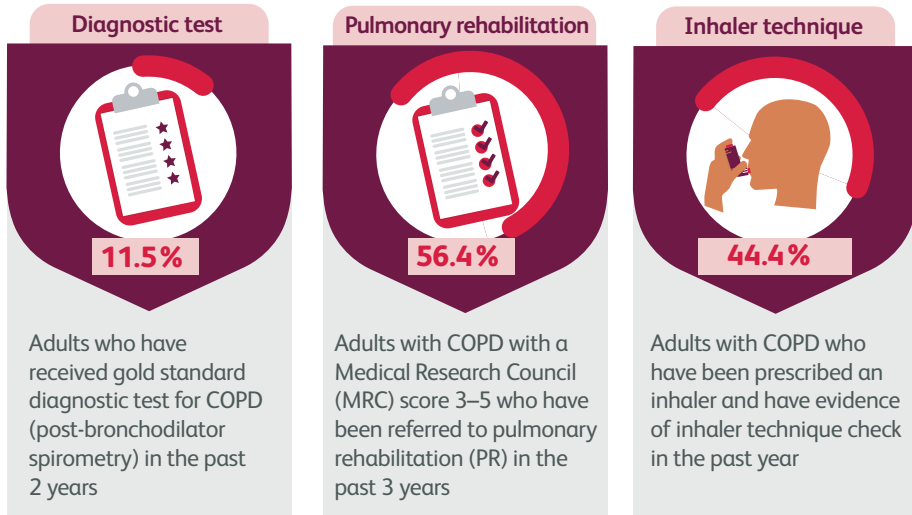


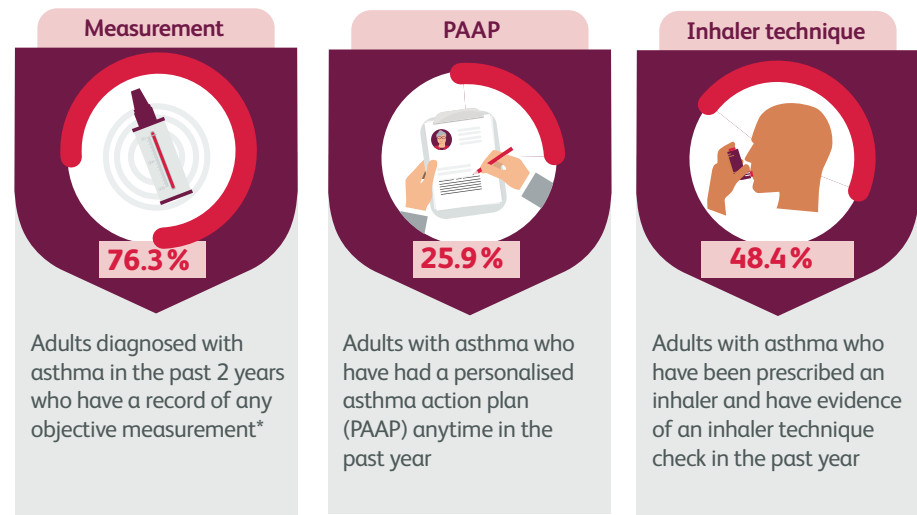
Report at a glance

All Wales results (data extracted from 226/398 GP practices capturing activity between 1 October 2018 and 31 March 2020)

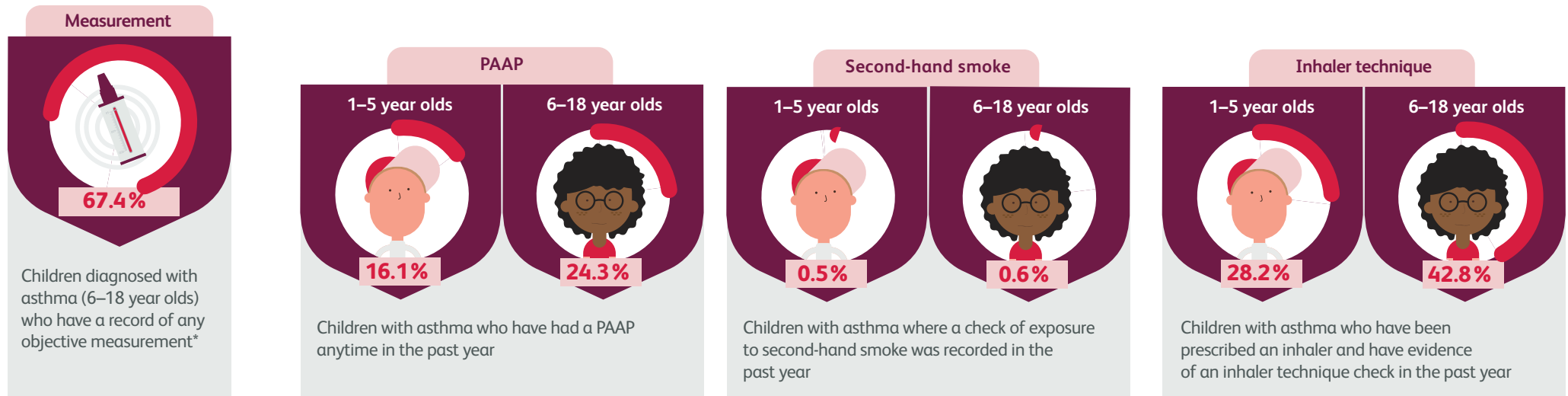
Adults with COPD



Adults with asthma



Children and young people with asthma



*includes spirometry, peak flow (>1 reading or evidence of peak flow diary) or fractional exhaled nitric oxide (FeNO)