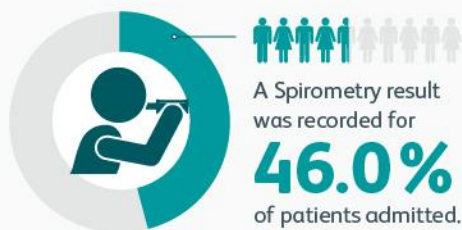


Report at a glance

Spirometry



QI priority

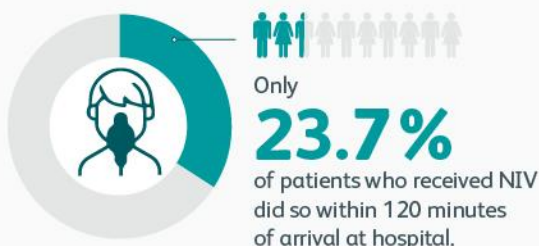
Ensure spirometry results are available for all patients admitted to hospital with an acute exacerbation of COPD.

Changes over time

(spirometry result recorded)



Non-invasive ventilation (NIV)



QI priority

Ensure all patients requiring NIV receive it within 120 minutes of arrival at hospital.

Changes over time

(NIV received within 120 minutes of arrival)



Respiratory review

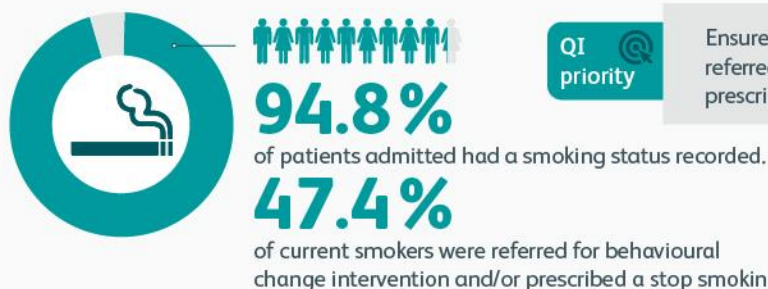


Changes over time

(patients reviewed by member of the respiratory team within 24 hours)



Smoking cessation



QI priority

Ensure that all current smokers are identified and, if they accept, referred for behavioural change intervention and/or prescribed a stop smoking drug.

Changes over time (smoking status recorded)



Discharge bundles



Changes over time (patients receiving a discharge bundle)

