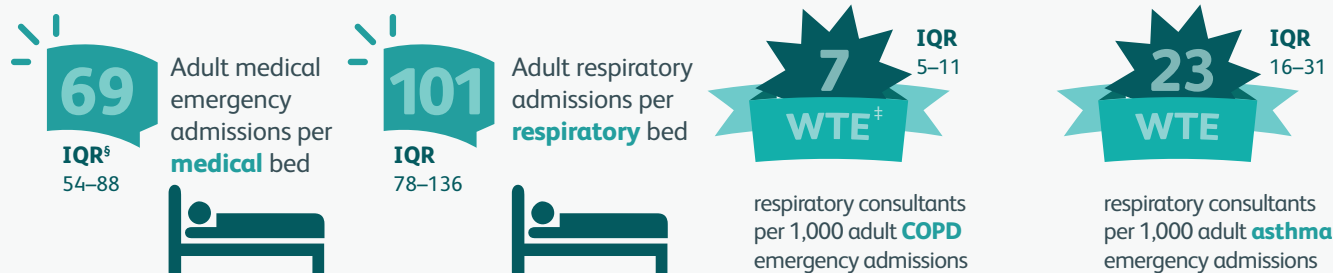
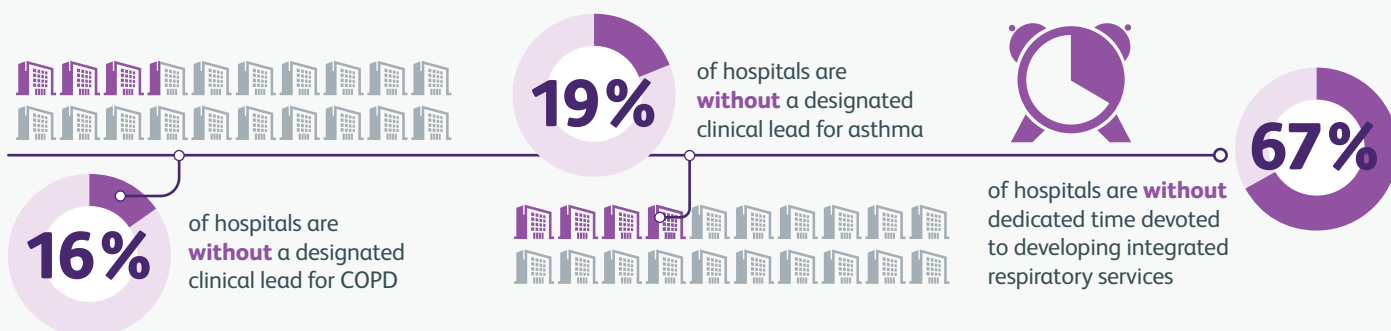


Report at a glance

Safe (CQC domain): Workload (medians)*,†

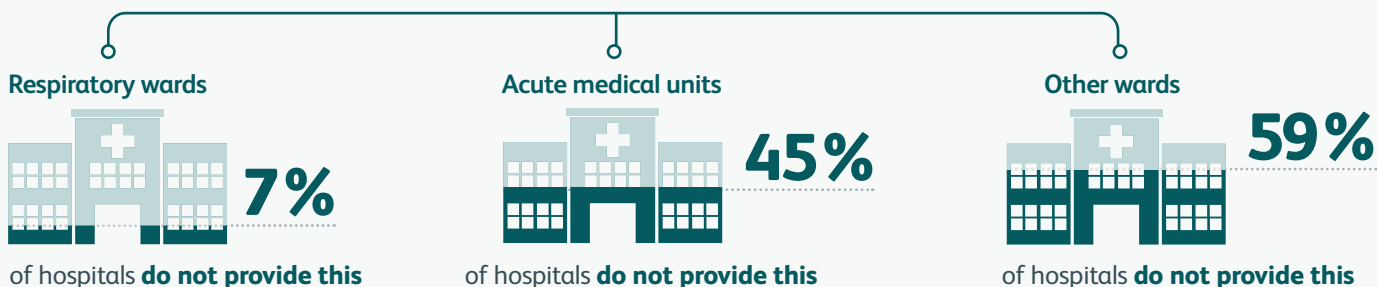


Well-led (CQC domain): Clinical leadership[¶]

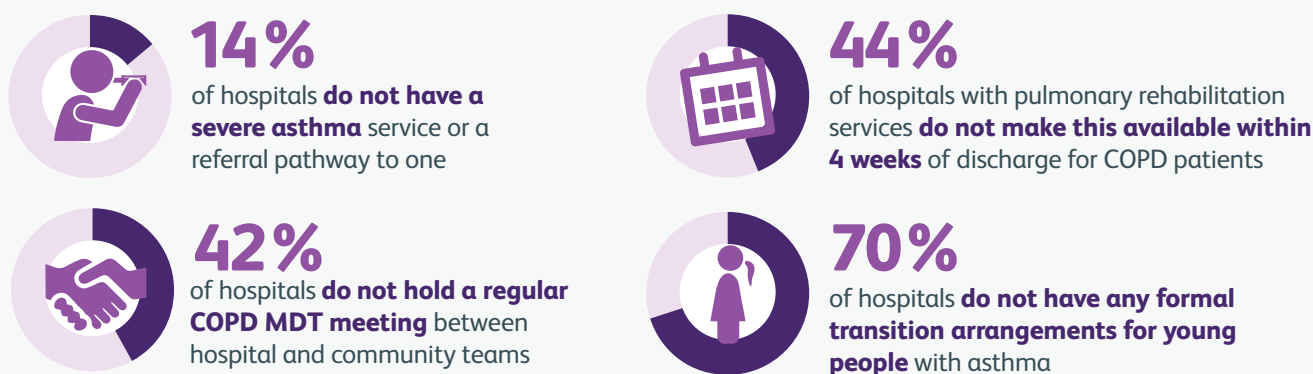


Effective (CQC domain): Respiratory review^{**}

Provision of ward rounds by **senior decision makers (ST3 or above)** from the respiratory team for new asthma and COPD patients:



Responsive (CQC domain): Integrated care^{††}



* Figures based on the 2018/19 financial year.

† There are no national standards for safe staffing of respiratory services. However, the observed variation between providers strongly suggests that standards are needed to ensure the NHS delivers safe care to all patients, regardless of the organisation they present to.

§ IQR = interquartile range.

‡ WTE = whole time equivalent.

¶ National recommendations are that each service should have a dedicated clinical lead to ensure a high-quality service in accordance to standards is provided for patients.

** Audit data demonstrates that patients reviewed by a member of the respiratory team are more likely to receive high-quality guideline-recommended care.

†† The NHS Long Term Plan recommends that the NHS develops integrated care systems to optimise patient care.