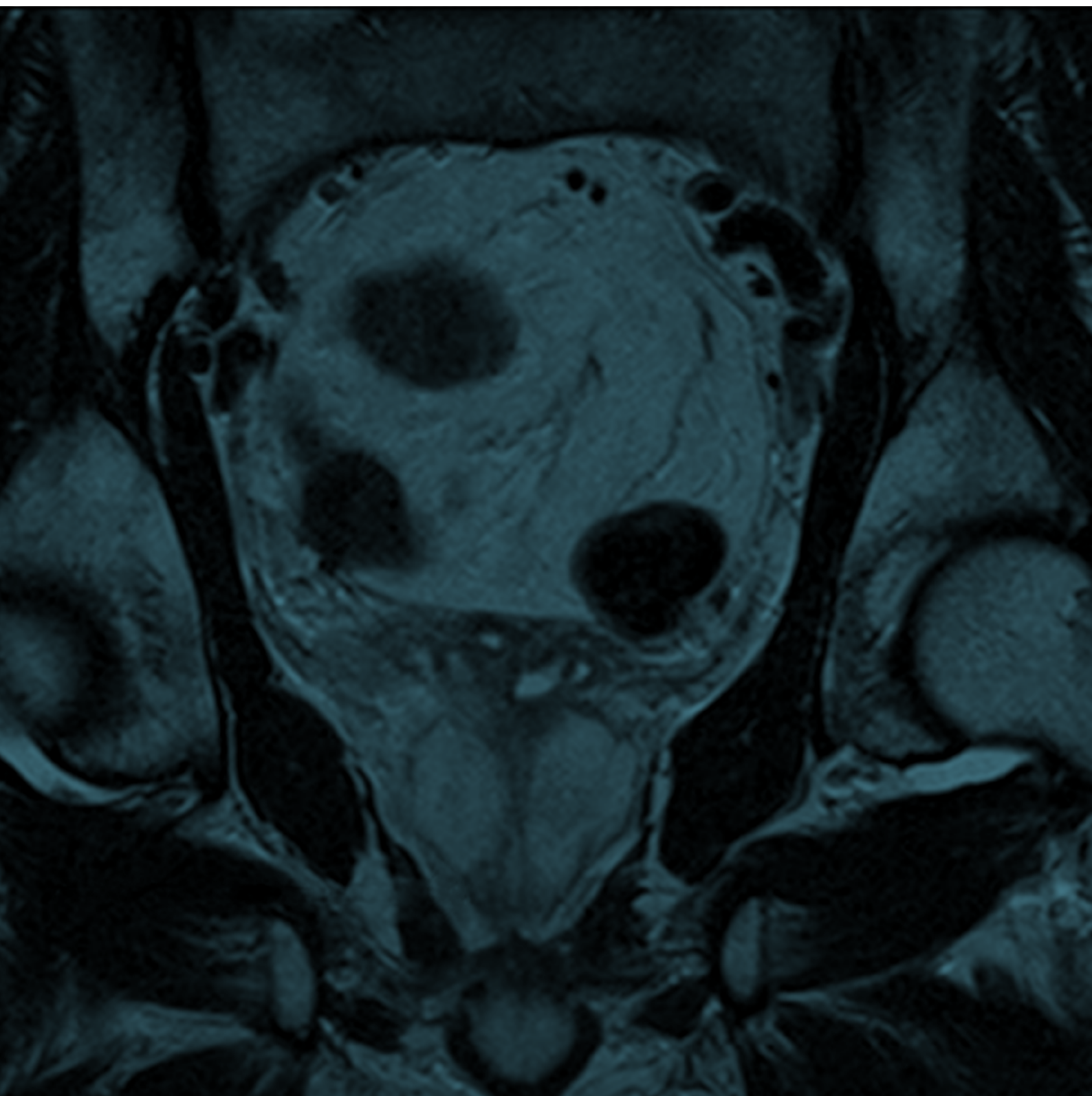


Annual Report 2019

Provider level results



National Prostate Cancer Audit

NPCA Annual Report 2019. Provider level results

London: The Royal College of Surgeons of England, 2019.



Registered Charity No: 212808

The Royal College of Surgeons of England (RCS) is an independent professional body committed to enabling surgeons to achieve and maintain the highest standards of surgical practice and patient care. As part of this it supports Audit and the evaluation of clinical effectiveness for surgery.

The NPCA is based at the The Clinical Effectiveness Unit (CEU). The CEU is an academic collaboration between The Royal College of Surgeons of England and the London School of Hygiene and Tropical Medicine, and undertakes national clinical audits and research. Since its inception in 1998, the CEU has become a national centre of expertise in methods, organisation, and logistics of large-scale studies of the quality of surgical care. The CEU managed the publication of the NPCA Annual Report, 2019.

In partnership with:



THE BRITISH ASSOCIATION
OF UROLOGICAL SURGEONS

The British Association of Urological Surgeons (BAUS) was founded in 1945 and exists to promote the highest standards of practice in urology, for the benefit of patients, by fostering education, research and clinical excellence. BAUS is a registered charity and qualified medical practitioners practising in the field of urological surgery are eligible to apply for membership. It is intended that this website will be a resource for urologists, their patients, other members of the healthcare team and the wider public.



The British Uro-oncology Group (BUG) was formed in 2004 to meet the needs of clinical and medical oncologists specialising in the field of urology. As the only dedicated professional association for uro-oncologists, its overriding aim is to provide a networking and support forum for discussion and exchange of research and policy ideas.



Public Health
England

National Cancer Registration and Analysis Service (NCRAS), Public Health England collects patient-level data from all NHS acute providers and from a range of national data feeds. Data sources are collated using a single data processing system ('Encore') and the management structure is delivered through eight regional offices across England.

The NCRAS is the data collection partner for the NPCA.

Commissioned by:



The Healthcare Quality Improvement Partnership (HQIP) is led by a consortium of the Academy of Medical Royal Colleges, the Royal College of Nursing and National Voices. Its aim is to promote quality improvement, and in particular to increase the impact that clinical audit has on healthcare quality in England and Wales. HQIP holds the contract to manage and develop the National Clinical Audit Programme, comprising more than 30 clinical audits that cover care provided to people with a wide range of medical, surgical and mental health conditions. The programme is funded by NHS England, the Welsh Government and, with some individual audits, also funded by the Health Department of the Scottish Government, DHSSPS Northern Ireland and the Channel Islands.

All rights reserved. Applications for the copyright owner's written permission to reproduce significant parts of this publication (including photocopying or storing it in any medium by electronic means and whether or not transiently or incidentally to some other use of this publication) should be addressed to the publisher. Brief extracts from this publication may be reproduced without the written permission of the copyright owner, provided that the source is fully acknowledged.

Copyright © 2020 Healthcare Quality Improvement Partnership (HQIP)

Published January 2020 by the National Prostate Cancer Audit

The Royal College of Surgeons of England
35-43 Lincoln's Inn Fields
London
WC2A 3PE

T 020 7869 6601
E npc@rcseng.ac.uk
www.npca.org.uk

Designed @ www.superbirdcreative.co.uk

Contents

Appendix 1: Overview of data completeness for selected data items by specialist MDT and Trust/Health Board in England/Wales over the period of 1 April 2017 and 31 March 2018.	1
Appendix 2: Provider level (specialist MDT) data for the performance indicators 1, 2 and 3.	7
<u>Performance indicator 1</u> : Proportion of men diagnosed with metastatic disease at first presentation.	7
<u>Performance indicator 2</u> : Proportion of men with low-risk localised prostate cancer undergoing radical prostate cancer therapy.	7
<u>Performance indicator 3</u> : Proportion of men with locally advanced disease receiving radical prostate cancer therapy.	7
Appendix 3: Provider level (specialist MDT) data for performance indicators 4 and 6	9
<u>Performance indicator 4</u> : Proportion of men with newly diagnosed node positive non-metastatic disease or metastatic disease who receive docetaxel in combination with ADT.	9
<u>Performance indicator 6</u> : Proportion of men having radical radiotherapy for high-risk disease receiving a brachytherapy boost.	9
Appendix 4: Provider level (radiotherapy centre) data for performance indicator 5.	11
<u>Performance indicator 5</u> : Proportion of men having radical radiotherapy for intermediate - or high-risk disease receiving a hypofractionated regimen.	11
Appendix 5: Provider level (surgical centre) data for the performance indicator 7.	13
<u>Performance indicator 7</u> : Proportion of patients who had an emergency readmission within 90 days of radical prostate cancer surgery.	13
Appendix 6: Provider level (surgical centre) data for the performance indicator 8.	15
<u>Performance indicator 8</u> : Proportion of patients experiencing at least one severe genitourinary (GU) complication within 2 years of radical prostatectomy.	15
Appendix 7: Provider level (radiotherapy centre) data for the performance indicator 9.	17
<u>Performance indicator 9</u> : Proportion of patients experiencing at least one severe gastrointestinal (GI) complication within 2 years of radical external beam radiotherapy.	17
Appendix 8: Outlier Communications.	19

Appendix 1: Overview of data completeness for selected data items by specialist MDT and Trust/Health Board in England/Wales over the period of 1 April 2017 and 31 March 2018.

Diagnosing Trust	No. of Cancer Registry records	Performance status		PSA		Gleason score		TNM		Multiparametric MRI	
	N	N	%	N	%	N	%	N	%	N	%
England											
Overall	39842	21010	52.7	28797	72.3	32762	82.2	30855	77.4	20659	51.9
Barking, Havering and Redbridge University Hospitals NHS Trust	390	167	42.8	379	97.2	278	71.3	289	74.1	365	93.6
Barking, Havering and Redbridge University Hospitals NHS Trust	390	167	42.8	379	97.2	278	71.3	289	74.1	365	93.6
Barts Health NHS Trust	551	99	18.0	377	68.4	468	84.9	518	94.0	202	36.7
Barts Health NHS Trust	427	87	20.4	259	60.7	364	85.2	398	93.2	199	46.6
Homerton University Hospital NHS Foundation Trust	124	12	9.7	118	95.2	104	83.9	120	96.8	3	2.4
Bradford Teaching Hospitals NHS Foundation Trust	771	516	66.9	587	76.1	667	86.5	608	78.9	449	58.2
Airedale NHS Foundation Trust	203	194	95.6	197	97.0	172	84.7	193	95.1	110	54.2
Bradford Teaching Hospitals NHS Foundation Trust	256	55	21.5	119	46.5	230	89.8	183	71.5	131	51.2
Calderdale And Huddersfield NHS Foundation Trust	312	267	85.6	271	86.9	265	84.9	232	74.4	208	66.7
Brighton and Sussex University Hospitals NHS Trust	744	46	6.2	439	59.0	595	80.0	573	77.0	6	0.8
Brighton and Sussex University Hospitals NHS Trust	313	8	2.6	263	84.0	237	75.7	233	74.4	5	1.6
East Sussex Healthcare NHS Trust	431	38	8.8	176	40.8	358	83.1	340	78.9	1	0.2
Cambridge University Hospitals NHS Foundation Trust	1525	1027	67.3	1262	82.8	1258	82.5	1174	77.0	1071	70.2
Bedford Hospital NHS Trust	207	191	92.3	192	92.8	184	88.9	183	88.4	189	91.3
Cambridge University Hospitals NHS Foundation Trust	362	169	46.7	253	69.9	300	82.9	324	89.5	258	71.3
North West Anglia NHS Foundation Trust	488	381	78.1	410	84.0	400	82.0	400	82.0	244	50.0
The Queen Elizabeth Hospital King's Lynn NHS Foundation Trust	231	161	69.7	211	91.3	179	77.5	93	40.3	210	90.9
West Suffolk NHS Foundation Trust	237	125	52.7	196	82.7	195	82.3	174	73.4	170	71.7
East Kent Hospitals University NHS Foundation Trust	667	573	85.9	517	77.5	534	80.1	602	90.3	498	74.7
East Kent Hospitals University NHS Foundation Trust	667	573	85.9	517	77.5	534	80.1	602	90.3	498	74.7
East and North Hertfordshire NHS Trust	864	428	49.5	699	80.9	713	82.5	613	70.9	455	52.7
East and North Hertfordshire NHS Trust	386	68	17.6	281	72.8	322	83.4	285	73.8	127	32.9
Luton and Dunstable University Hospital NHS Foundation Trust	227	165	72.7	192	84.6	182	80.2	156	68.7	196	86.3
West Hertfordshire Hospitals NHS Trust	251	195	77.7	226	90.0	209	83.3	172	68.5	132	52.6
Gloucestershire Hospitals NHS Foundation Trust	672	147	21.9	45	6.7	527	78.4	478	71.1	14	2.1
Gloucestershire Hospitals NHS Foundation Trust	503	1	0.2	7	1.4	390	77.5	367	73.0	6	1.2
Wye Valley NHS Trust	169	146	86.4	38	22.5	137	81.1	111	65.7	8	4.7
Guy's and St Thomas' NHS Foundation Trust	1113	442	39.7	719	64.6	931	83.6	850	76.4	382	34.3
Guy's and St Thomas' NHS Foundation Trust	487	105	21.6	194	39.8	390	80.1	404	83.0	183	37.6
King's College Hospital NHS Foundation Trust	426	307	72.1	355	83.3	389	91.3	340	79.8	136	31.9
Lewisham and Greenwich NHS Trust	200	30	15.0	170	85.0	152	76.0	106	53.0	63	31.5

Diagnosing Trust	No. of Cancer Registry records	Performance status		PSA		Gleason score		TNM		Multiparametric MRI	
	N	N	%	N	%	N	%	N	%	N	%
Hull University Teaching Hospitals NHS Trust	1153	488	42.3	943	81.8	889	77.1	858	74.4	467	40.5
Hull University Teaching Hospitals NHS Trust	439	81	18.5	367	83.6	339	77.2	249	56.7	77	17.5
Northern Lincolnshire and Goole NHS Foundation Trust	287	16	5.6	176	61.3	200	69.7	210	73.2	24	8.4
York Teaching Hospital NHS Foundation Trust	427	391	91.6	400	93.7	350	82.0	399	93.4	366	85.7
Imperial College Healthcare NHS Trust	1042	699	67.1	574	55.1	867	83.2	813	78.0	251	24.1
Chelsea and Westminster Hospital NHS Foundation Trust	270	182	67.4	189	70.0	229	84.8	214	79.3	77	28.5
Imperial College Healthcare NHS Trust	373	244	65.4	144	38.6	317	85.0	305	81.8	14	3.8
London North West Healthcare NHS Trust	284	164	57.7	140	49.3	233	82.0	194	68.3	53	18.7
The Hillingdon Hospitals NHS Foundation Trust	115	109	94.8	101	87.8	88	76.5	100	87.0	107	93.0
Lancashire Teaching Hospitals NHS Foundation Trust	1062	989	93.1	998	94.0	783	73.7	790	74.4	948	89.3
Blackpool Teaching Hospitals NHS Foundation Trust	232	214	92.2	209	90.1	201	86.6	146	62.9	198	85.3
East Lancashire Hospitals NHS Trust	271	260	95.9	257	94.8	215	79.3	221	81.5	267	98.5
Lancashire Teaching Hospitals NHS Foundation Trust	264	242	91.7	244	92.4	120	45.5	178	67.4	204	77.3
University Hospitals of Morecambe Bay NHS Foundation Trust	295	273	92.5	288	97.6	247	83.7	245	83.1	279	94.6
Leeds Teaching Hospitals NHS Trust	603	335	55.6	322	53.4	483	80.1	460	76.3	401	66.5
Harrogate and District NHS Foundation Trust	171	153	89.5	162	94.7	139	81.3	136	79.5	163	95.3
Leeds Teaching Hospitals NHS Trust	432	182	42.1	160	37.0	344	79.6	324	75.0	238	55.1
Manchester University NHS Foundation Trust	779	710	91.1	707	90.8	672	86.3	695	89.2	694	89.1
Manchester University NHS Foundation Trust	356	304	85.4	294	82.6	301	84.6	310	87.1	284	79.8
Pennine Acute Hospitals NHS Trust	423	406	96.0	413	97.6	371	87.7	385	91.0	410	96.9
Medway NHS Foundation Trust	904	689	76.2	734	81.2	769	85.1	739	81.7	734	81.2
Dartford and Gravesham NHS Trust	215	202	94.0	200	93.0	165	76.7	180	83.7	203	94.4
Maidstone and Tunbridge Wells NHS Trust	520	381	73.3	449	86.3	462	88.8	432	83.1	450	86.5
Medway NHS Foundation Trust	169	106	62.7	85	50.3	142	84.0	127	75.1	81	47.9
Mid Yorkshire Hospitals NHS Trust	371	254	68.5	200	53.9	312	84.1	288	77.6	307	82.7
Mid Yorkshire Hospitals NHS Trust	371	254	68.5	200	53.9	312	84.1	288	77.6	307	82.7
Norfolk and Norwich University Hospitals NHS Foundation Trust	768	422	54.9	588	76.6	626	81.5	508	66.1	165	21.5
James Paget University Hospitals NHS Foundation Trust	176	167	94.9	165	93.8	122	69.3	120	68.2	164	93.2
Norfolk and Norwich University Hospitals NHS Foundation Trust	592	255	43.1	423	71.5	504	85.1	388	65.5	1	0.2
North Bristol NHS Trust	1368	1073	78.4	1125	82.2	1105	80.8	1067	78.0	1093	79.9
Great Western Hospitals NHS Foundation Trust	238	141	59.2	206	86.6	210	88.2	177	74.4	204	85.7
North Bristol NHS Trust	595	540	90.8	512	86.1	489	82.2	442	74.3	532	89.4
Royal United Hospitals Bath NHS Foundation Trust	288	246	85.4	252	87.5	224	77.8	259	89.9	228	79.2
Weston Area Health NHS Trust	98	62	63.3	87	88.8	71	72.4	69	70.4	77	78.6
Yeovil District Hospital NHS Foundation Trust	149	84	56.4	68	45.6	111	74.5	120	80.5	52	34.9

Diagnosing Trust	No. of Cancer Registry records	Performance status		PSA		Gleason score		TNM		Multiparametric MRI	
	N	N	%	N	%	N	%	N	%	N	%
Northampton General Hospital NHS Trust	514	165	32.1	366	71.2	439	85.4	307	59.7	259	50.4
Kettering General Hospital NHS Foundation Trust	262	18	6.9	156	59.5	228	87.0	129	49.2	51	19.5
Northampton General Hospital NHS Trust	252	147	58.3	210	83.3	211	83.7	178	70.6	208	82.5
Nottingham University Hospitals NHS Trust	898	178	19.8	548	61.0	758	84.4	505	56.2	316	35.2
Nottingham University Hospitals NHS Trust	595	168	28.2	500	84.0	489	82.2	375	63.0	311	52.3
Sherwood Forest Hospitals NHS Foundation Trust	303	10	3.3	48	15.8	269	88.8	130	42.9	5	1.7
Oxford University Hospitals NHS Foundation Trust	1028	383	37.3	487	47.4	908	88.3	758	73.7	382	37.2
Buckinghamshire Healthcare NHS Trust	278	44	15.8	205	73.7	242	87.1	160	57.6	121	43.5
Milton Keynes University Hospital NHS Foundation Trust	187	95	50.8	57	30.5	169	90.4	137	73.3	36	19.3
Oxford University Hospitals NHS Foundation Trust	563	244	43.3	225	40.0	497	88.3	461	81.9	225	40.0
Plymouth Hospitals NHS Trust	735	269	36.6	577	78.5	572	77.8	561	76.3	404	55.0
Plymouth Hospitals NHS Trust	362	9	2.5	266	73.5	304	84.0	297	82.0	93	25.7
Royal Cornwall Hospitals NHS Trust	373	260	69.7	311	83.4	268	71.8	264	70.8	311	83.4
Portsmouth Hospitals NHS Trust	605	322	53.2	527	87.1	522	86.3	519	85.8	505	83.5
Isle of Wight NHS Trust	177	132	74.6	157	88.7	150	84.7	157	88.7	157	88.7
Portsmouth Hospitals NHS Trust	428	190	44.4	370	86.4	372	86.9	362	84.6	348	81.3
Royal Berkshire NHS Foundation Trust	399	53	13.3	313	78.4	347	87.0	288	72.2	328	82.2
Royal Berkshire NHS Foundation Trust	399	53	13.3	313	78.4	347	87.0	288	72.2	328	82.2
Royal Devon and Exeter NHS Foundation Trust	1159	882	76.1	1082	93.4	923	79.6	960	82.8	1070	92.3
Northern Devon Healthcare NHS Trust	131	129	98.5	130	99.2	94	71.8	97	74.0	123	93.9
Royal Devon and Exeter NHS Foundation Trust	473	401	84.8	442	93.4	397	83.9	404	85.4	441	93.2
Taunton and Somerset NHS Foundation Trust	288	254	88.2	260	90.3	207	71.9	233	80.9	260	90.3
Torbay and South Devon NHS Foundation Trust	267	98	36.7	250	93.6	225	84.3	226	84.6	246	92.1
Royal Liverpool and Broadgreen University Hospitals NHS Trust	772	626	81.1	696	90.2	606	78.5	577	74.7	634	82.1
Aintree University Hospital NHS Foundation Trust	222	218	98.2	205	92.3	150	67.6	213	95.9	150	67.6
Royal Liverpool and Broadgreen University Hospitals NHS Trust	145	39	26.9	112	77.2	119	82.1	103	71.0	109	75.2
Southport and Ormskirk Hospital NHS Trust	155	142	91.6	144	92.9	119	76.8	89	57.4	141	91.0
St Helens and Knowsley Hospital Services NHS Trust	250	227	90.8	235	94.0	218	87.2	172	68.8	234	93.6
Royal Surrey County Hospital NHS Foundation Trust	2277	1053	46.2	1687	74.1	1797	78.9	1683	73.9	1127	49.5
Ashford and St Peter's Hospitals NHS Foundation Trust	193	28	14.5	83	43.0	122	63.2	110	57.0	37	19.2
Frimley Health NHS Foundation Trust	493	273	55.4	421	85.4	377	76.5	364	73.8	335	68.0
Hampshire Hospitals NHS Foundation Trust	364	59	16.2	242	66.5	296	81.3	266	73.1	25	6.9
Royal Surrey County Hospital NHS Foundation Trust	376	30	8.0	142	37.8	320	85.1	224	59.6	37	9.8
Surrey and Sussex Healthcare NHS Trust	336	158	47.0	300	89.3	290	86.3	282	83.9	270	80.4
Western Sussex Hospitals NHS Foundation Trust	515	505	98.1	499	96.9	392	76.1	437	84.9	423	82.1

Diagnosing Trust	No. of Cancer Registry records	Performance status		PSA		Gleason score		TNM		Multiparametric MRI	
	N	N	%	N	%	N	%	N	%	N	%
Salford Royal NHS Foundation Trust	511	399	78.1	401	78.5	450	88.1	440	86.1	368	72.0
Bolton NHS Foundation Trust	154	128	83.1	131	85.1	140	90.9	121	78.6	113	73.4
Salford Royal NHS Foundation Trust	158	80	50.6	76	48.1	140	88.6	123	77.8	62	39.2
Wrightington, Wigan and Leigh NHS Foundation Trust	199	191	96.0	194	97.5	170	85.4	196	98.5	193	97.0
Sheffield Teaching Hospitals NHS Foundation Trust	1282	534	41.7	1107	86.3	1010	78.8	1000	78.0	764	59.6
Barnsley Hospital NHS Foundation Trust	122	75	61.5	114	93.4	80	65.6	66	54.1	115	94.3
Chesterfield Royal Hospital NHS Foundation Trust	224	187	83.5	215	96.0	170	75.9	213	95.1	218	97.3
Doncaster and Bassetlaw Teaching Hospitals NHS Foundation Trust	351	77	21.9	342	97.4	295	84.0	329	93.7	5	1.4
Sheffield Teaching Hospitals NHS Foundation Trust	407	109	26.8	273	67.1	333	81.8	280	68.8	267	65.6
The Rotherham NHS Foundation Trust	178	86	48.3	163	91.6	132	74.2	112	62.9	159	89.3
South Tees Hospitals NHS Foundation Trust	676	370	54.7	614	90.8	619	91.6	561	83.0	128	18.9
North Tees And Hartlepool NHS Foundation Trust	245	237	96.7	236	96.3	214	87.3	184	75.1	1	0.4
South Tees Hospitals NHS Foundation Trust	431	133	30.9	378	87.7	405	94.0	377	87.5	127	29.5
South Tyneside and Sunderland NHS Foundation Trust	571	261	45.7	525	91.9	410	71.8	374	65.5	450	78.8
County Durham and Darlington NHS Foundation Trust	214	123	57.5	195	91.1	187	87.4	174	81.3	169	79.0
South Tyneside and Sunderland NHS Foundation Trust	357	138	38.7	330	92.4	223	62.5	200	56.0	281	78.7
Southend University Hospital NHS Foundation Trust	1581	588	37.2	1054	66.7	1301	82.3	1171	74.1	787	49.8
Basildon and Thurrock University Hospitals NHS Foundation Trust	196	59	30.1	99	50.5	156	79.6	142	72.4	20	10.2
East Suffolk and North Essex NHS Foundation Trust	798	488	61.2	600	75.2	659	82.6	581	72.8	510	63.9
Mid Essex Hospital Services NHS Trust	322	25	7.8	111	34.5	282	87.6	258	80.1	23	7.1
Southend University Hospital NHS Foundation Trust	265	16	6.0	244	92.1	204	77.0	190	71.7	234	88.3
Stockport NHS Foundation Trust	619	286	46.2	348	56.2	511	82.6	537	86.8	153	24.7
East Cheshire NHS Trust	104	15	14.4	88	84.6	91	87.5	95	91.3	2	1.9
Mid Cheshire Hospitals NHS Foundation Trust	154	109	70.8	126	81.8	133	86.4	140	90.9	75	48.7
Stockport NHS Foundation Trust	280	142	50.7	62	22.1	220	78.6	245	87.5	15	5.4
Tameside and Glossop Integrated Care NHS Foundation Trust	81	20	24.7	72	88.9	67	82.7	57	70.4	61	75.3
The Christie NHS Foundation Trust	62	0	0.0	2	3.2	54	87.1	38	61.3	1	1.6
The Christie NHS Foundation Trust	62	0	0.0	2	3.2	54	87.1	38	61.3	1	1.6
The Newcastle upon Tyne Hospitals NHS Foundation Trust	928	520	56.0	763	82.2	756	81.5	758	81.7	175	18.9
Gateshead Health NHS Foundation Trust	130	111	85.4	125	96.2	109	83.8	107	82.3	74	56.9
North Cumbria University Hospitals NHS Trust	208	76	36.5	140	67.3	172	82.7	163	78.4	86	41.3
Northumbria Healthcare NHS Foundation Trust	234	161	68.8	227	97.0	205	87.6	207	88.5	3	1.3
The Newcastle upon Tyne Hospitals NHS Foundation Trust	356	172	48.3	271	76.1	270	75.8	281	78.9	12	3.4
The Princess Alexandra Hospital NHS Trust	378	258	68.3	187	49.5	341	90.2	340	89.9	89	23.5
North Middlesex University Hospital NHS Trust	117	100	85.5	101	86.3	98	83.8	105	89.7	89	76.1

Diagnosing Trust	No. of Cancer Registry records	Performance status		PSA		Gleason score		TNM		Multiparametric MRI	
	N	N	%	N	%	N	%	N	%	N	%
The Princess Alexandra Hospital NHS Trust	261	158	60.5	86	33.0	243	93.1	235	90.0	0	0.0
The Royal Bournemouth and Christchurch Hospitals NHS Foundation Trust	789	638	80.9	492	62.4	566	71.7	735	93.2	136	17.2
Dorset County Hospital NHS Foundation Trust	318	243	76.4	58	18.2	235	73.9	286	89.9	2	0.6
Poole Hospital NHS Foundation Trust	16	6	37.5	8	50.0	4	25.0	7	43.8	2	12.5
The Royal Bournemouth and Christchurch Hospitals NHS Foundation Trust	455	389	85.5	426	93.6	327	71.9	442	97.1	132	29.0
The Royal Marsden NHS Foundation Trust	1077	456	42.3	581	53.9	941	87.4	905	84.0	601	55.8
Croydon Health Services NHS Trust	160	34	21.3	42	26.3	136	85.0	134	83.8	61	38.1
Epsom And St Helier University Hospitals NHS Trust	308	140	45.5	223	72.4	270	87.7	255	82.8	210	68.2
Kingston Hospital NHS Foundation Trust	183	159	86.9	171	93.4	143	78.1	164	89.6	171	93.4
St George's University Hospitals NHS Foundation Trust	293	76	25.9	69	23.5	278	94.9	237	80.9	98	33.4
The Royal Marsden NHS Foundation Trust	133	47	35.3	76	57.1	114	85.7	115	86.5	61	45.9
University College London Hospitals NHS Foundation Trust	818	406	49.6	551	67.4	698	85.3	738	90.2	257	31.4
Royal Free London NHS Foundation Trust	428	289	67.5	367	85.7	339	79.2	376	87.9	124	29.0
The Whittington Health NHS Trust	85	32	37.6	83	97.6	76	89.4	76	89.4	73	85.9
University College London Hospitals NHS Foundation Trust	305	85	27.9	101	33.1	283	92.8	286	93.8	60	19.7
University Hospital Southampton NHS Foundation Trust	652	514	78.8	565	86.7	526	80.7	553	84.8	210	32.2
Salisbury NHS Foundation Trust	194	146	75.3	170	87.6	165	85.1	153	78.9	68	35.1
University Hospital Southampton NHS Foundation Trust	458	368	80.3	395	86.2	361	78.8	400	87.3	142	31.0
University Hospitals Birmingham NHS Foundation Trust	1260	539	42.8	953	75.6	1151	91.3	927	73.6	487	38.7
Sandwell and West Birmingham Hospitals NHS Trust	268	59	22.0	218	81.3	251	93.7	192	71.6	19	7.1
University Hospitals Birmingham NHS Foundation Trust	793	434	54.7	584	73.6	728	91.8	590	74.4	414	52.2
Walsall Healthcare NHS Trust	199	46	23.1	151	75.9	172	86.4	145	72.9	54	27.1
University Hospitals Coventry and Warwickshire NHS Trust	1101	773	70.2	924	83.9	872	79.2	826	75.0	969	88.0
George Eliot Hospital NHS Trust	64	38	59.4	40	62.5	52	81.3	37	57.8	33	51.6
South Warwickshire NHS Foundation Trust	165	110	66.7	156	94.5	127	77.0	118	71.5	160	97.0
University Hospitals Coventry and Warwickshire NHS Trust	345	296	85.8	312	90.4	278	80.6	282	81.7	311	90.1
Worcestershire Acute Hospitals NHS Trust	527	329	62.4	416	78.9	415	78.7	389	73.8	465	88.2
University Hospitals of Derby and Burton NHS Foundation Trust	611	241	39.4	475	77.7	518	84.8	441	72.2	514	84.1
University Hospitals of Derby and Burton NHS Foundation Trust	611	241	39.4	475	77.7	518	84.8	441	72.2	514	84.1
University Hospitals of Leicester NHS Trust	1062	23	2.2	383	36.1	864	81.4	760	71.6	123	11.6
United Lincolnshire Hospitals NHS Trust	464	19	4.1	302	65.1	394	84.9	315	67.9	2	0.4
University Hospitals of Leicester NHS Trust	598	4	0.7	81	13.5	470	78.6	445	74.4	121	20.2
University Hospitals of North Midlands NHS Trust	1480	540	36.5	759	51.3	1322	89.3	1105	74.7	312	21.1
Shrewsbury and Telford Hospital NHS Trust	365	327	89.6	263	72.1	324	88.8	291	79.7	4	1.1
The Dudley Group NHS Foundation Trust	339	48	14.2	73	21.5	316	93.2	273	80.5	54	15.9

Diagnosing Trust	No. of Cancer Registry records	Performance status		PSA		Gleason score		TNM		Multiparametric MRI	
	N	N	%	N	%	N	%	N	%	N	%
The Royal Wolverhampton NHS Trust	324	163	50.3	293	90.4	282	87.0	247	76.2	251	77.5
University Hospitals of North Midlands NHS Trust	452	2	0.4	130	28.8	400	88.5	294	65.0	3	0.7
Wirral University Teaching Hospital NHS Foundation Trust	647	628	97.1	614	94.9	501	77.4	563	87.0	608	94.0
Countess of Chester Hospital NHS Foundation Trust	190	189	99.5	188	98.9	169	88.9	171	90.0	187	98.4
The Clatterbridge Cancer Centre NHS Foundation Trust	4	0	0.0	0	0.0	3	75.0	2	50.0	0	0.0
Warrington and Halton Hospitals NHS Foundation Trust	149	143	96.0	144	96.6	83	55.7	125	83.9	144	96.6
Wirral University Teaching Hospital NHS Foundation Trust	304	296	97.4	282	92.8	246	80.9	265	87.2	277	91.1
Wales											
Overall	2239	2239	100.0	1955	87.3	1955	87.3	1757	78.5	2204	98.4
Abertawe Bro Morgannwg University Health Board	751	751	100.0	657	87.5	657	87.5	674	89.7	739	98.4
Abertawe Bro Morgannwg University Health Board	399	399	100.0	350	87.7	350	87.7	370	92.7	390	97.7
Hywel Dda University Health Board	352	352	100.0	307	87.2	307	87.2	304	86.4	349	99.1
Aneurin Bevan University Health Board	372	372	100.0	296	79.6	296	79.6	296	79.6	361	97.0
Aneurin Bevan University Health Board	372	372	100.0	296	79.6	296	79.6	296	79.6	361	97.0
Betsi Cadwaladr University Health Board	532	532	100.0	470	88.3	470	88.3	392	73.7	530	99.6
Betsi Cadwaladr University Health Board	532	532	100.0	470	88.3	470	88.3	392	73.7	530	99.6
Cardiff and Vale University Health Board	584	584	100.0	532	91.1	532	91.1	395	67.6	574	98.3
Cardiff and Vale University Health Board	296	296	100.0	277	93.6	277	93.6	253	85.5	290	98.0
Cwm Taf University Health Board	288	288	100.0	255	88.5	255	88.5	142	49.3	284	98.6
Trust commentary provided by NCRAS further to data validation exercise (number of cases allocated to a Trust at diagnosis and completeness by key data items):											
North West Anglia NHS Foundation Trust: Trust queried number of patients allocated, but was satisfied with the explanation that patients are allocated to the trust of diagnosis.											
Royal Free London NHS Foundation Trust: Trust queried data completeness for Multiparametric MRI. This data item was not submitted for all of the audit period, explaining the low data completeness. Completeness from December 2017 onwards has been very good.											
Maidstone & Tunbridge Wells NHS Trust: Trust queried number of patients allocated, plus data completeness of Gleason and Treatment Modality. Patient data provided to the trust; no further feedback received.											
Harrogate and District NHS Foundation Trust: Trust queried number of patients allocated. Investigations into the patient level data were carried out by the trust and NCRAS: There were 2 patients the trust thought should not be included (1 subsequently did not have cancer, though the registry have evidence of cancer, 1 was a recurrence). There were 4 patients the trust thought should be included (3 have diagnosis dates outside of audit period, 1 also had a bladder cancer on the same date as diagnosed with a prostate cancer).											
Blackpool Teaching Hospitals NHS Foundation Trust: Trust queried low number of patients allocated - this is due to the patients being allocated to the trust of diagnosis. The Christie is a tertiary trust so treats many patients; however the numbers allocated in the table reflect the patients they diagnosed. Following comment: During this audit period Blackpool Teaching Hospitals was the primary provider of Prostate template biopsy services for a number of Trusts. As a result, patients who received a pathological diagnosis of Prostate cancer following template biopsy have been recorded in the audit with Blackpool as diagnosing Trust. The number of Prostate cancer patients allocated to Blackpool Teaching Hospitals is therefore higher than would be expected, and with the majority of the NPCA data items being collected by their originating Trust, this has negatively impacted on our data completeness.											
The Christie NHS Foundation Trust: Trust queried low number of patients allocated - this is due to the patients being allocated to the trust of diagnosis. The Christie is a tertiary trust so treats many patients; however the numbers allocated in the table reflect the patients they diagnosed.											
East Lancashire Hospitals NHS Trust: Trust queried number of patients allocated, plus data completeness of TNM Stage. Following investigation into the patient level data, the trust found 10 patients that were diagnosed at other trusts, so not included. A further 20 patients were also investigated with assistance from NCRAS as not included (2 also had a bladder cancer diagnosis, 1 had the same date of diagnosis as another trust, but case allocated to other trust, 7 had dates of diagnosis outside of the audit period, 1 not registered as prostate cancer in the registry, 9 patients were attributed to other trusts as per trust of diagnosis algorithm).											
Salford Royal NHS Foundation Trust: Trust queried the data completeness of PSA scores. These were not initially being recorded in the correct place on their cancer management database, and hence not pulling through for the audit, but they thought this issue had been rectified for 17/18 data. Patient data provided to the trust; no further feedback received.											
The Royal Liverpool and Broadgreen University Hospitals: Trust queried low data completeness of Performance status. Following investigations into the patient level data and discussions with NCRAS, the trust are satisfied the data reflects what has been submitted, but in future would like the opportunity to review the data so that changes can be made ahead of publication.											
Torbay and South Devon NHS Foundation Trust: Trust queried low data completeness of Performance status and stated the data completeness is higher in CancerStats COSD L2 report. Following investigations into the patient level data with the trust and NCRAS, an issue was found with NCRAS mapping to load the NPCA data into the registry database. 'o' had been incorrectly been included with other invalid codes in the trust submission. The back data has now been corrected.											
Wye Valley NHS Trust: Trust queried data completeness for Multiparametric MRI. Data for this data item was not submitted for all of the audit period, explaining the low data completeness. Patient data provided to the trust; no further feedback received.											
Summary of recently merged Trusts:											
Heart of England, RR1, and University Hospitals Birmingham, RRR, merged to become University Hospitals Birmingham NHS Foundation Trust (RRK).											
Burton, RJE, and Derby, RTG, merged to form University Hospitals of Derby and Burton (RTG).											
Ipswich Hospital NHS Trust, RGQ, and Colchester Hospital University NHS Foundation Trust, RDE, merged to form East Suffolk and North Essex NHS Foundation Trust (RDE).											

Appendix 2: Provider level (specialist MDT) data for the performance indicators 1, 2 and 3.

Performance indicator 1: Proportion of men diagnosed with metastatic disease at first presentation.

Performance indicator 2: Proportion of men with low-risk localised prostate cancer undergoing radical prostate cancer therapy.

Performance indicator 3: Proportion of men with locally advanced disease receiving radical prostate cancer therapy.

Specialist MDT	No. of men with disease status determined	No. men diagnosed with metastatic disease		No. of men diagnosed with low-risk localised disease	No. men with low-risk localised disease receiving radical treatment		No. of men diagnosed with locally advanced disease	No. men with locally advanced disease receiving radical treatment	
		N	%		N	%		N	%
Overall	39295	6366	16.2	2581	110	4.3	15573	10613	68.1
Abertawe Bro Morgannwg University Health Board	742	88	11.9	16	2	13.2	263	104	46.1
Aneurin Bevan University Health Board	339	51	15.0	63	9	14.5	107	72	72.7
Barking, Havering and Redbridge University Hospitals NHS Trust	338	35	10.4	N/A	N/A	N/A	124	83	67.3
Barts Health NHS Trust	538	74	13.8	25	0	0.0	193	110	54.4
Betsi Cadwaladr University Health Board	518	60	11.6	29	2	6.7	186	135	85.0
Bradford Teaching Hospitals NHS Foundation Trust	742	114	15.4	35	1	3.2	323	220	69.1
Brighton and Sussex University Hospitals NHS Trust	657	87	13.2	14	0	0.0	285	185	61.6
Cambridge University Hospitals NHS Foundation Trust	1452	192	13.2	130	10	8.1	551	361	64.9
Cardiff and Vale University Health Board	581	83	14.3	63	7	12.1	166	116	77.9
East Kent Hospitals University NHS Foundation Trust	627	95	15.2	58	1	1.6	265	160	61.0
East and North Hertfordshire NHS Trust	802	120	15.0	56	6	10.8	297	233	78.8
Gloucestershire Hospitals NHS Foundation Trust	606	109	18.0	25	3	13.1	234	161	67.2
Guy's and St Thomas' NHS Foundation Trust	978	104	10.6	64	3	4.2	347	232	63.4
Hull University Teaching Hospitals NHS Trust	1063	194	18.3	88	1	1.2	441	304	69.4
Imperial College Healthcare NHS Trust	948	139	14.7	46	0	0.0	407	273	66.8
Lancashire Teaching Hospitals NHS Foundation Trust	980	186	19.0	59	4	7.1	394	261	69.2
Leeds Teaching Hospitals NHS Trust	576	107	18.6	49	2	3.9	253	169	67.9
Manchester University NHS Foundation Trust	766	129	16.8	87	1	1.1	290	194	71.1
Medway NHS Foundation Trust	865	112	12.9	51	0	0.0	351	242	67.3
Mid Yorkshire Hospitals NHS Trust	358	69	19.3	25	2	8.8	154	104	68.9
Norfolk and Norwich University Hospitals NHS Foundation Trust	706	110	15.6	35	0	0.0	306	227	72.7
North Bristol NHS Trust	1277	204	16.0	103	3	2.9	505	348	68.1
Northampton General Hospital NHS Trust	442	62	14.0	27	0	0.0	163	92	54.7
Nottingham University Hospitals NHS Trust	811	149	18.4	82	0	0.0	278	192	65.6
Oxford University Hospitals NHS Foundation Trust	928	154	16.6	58	1	1.5	327	227	64.0
Plymouth Hospitals NHS Trust	695	132	19.0	41	2	4.3	299	199	64.4
Portsmouth Hospitals NHS Trust	578	94	16.3	32	0	0.0	229	149	66.9
Royal Berkshire NHS Foundation Trust	369	45	12.2	21	1	4.8	159	119	73.2
Royal Devon and Exeter NHS Foundation Trust	1086	190	17.5	90	0	0.0	458	335	75.4
Royal Liverpool and Broadgreen University Hospitals NHS Trust	718	149	20.8	34	0	0.0	284	171	62.6
Royal Surrey County Hospital NHS Foundation Trust	1982	297	15.0	76	9	11.0	822	591	70.8
Salford Royal NHS Foundation Trust	493	82	16.6	69	4	5.9	178	121	69.5
Sheffield Teaching Hospitals NHS Foundation Trust	1228	271	22.1	46	2	4.8	569	410	73.1

Specialist MDT	No. of men with disease status determined	No. men diagnosed with metastatic disease		No. of men diagnosed with low-risk localised disease	No. men with low-risk localised disease receiving radical treatment		No. of men diagnosed with locally advanced disease	No. men with locally advanced disease receiving radical treatment	
		N	%		N	%		N	%
South Tees Hospitals NHS Foundation Trust	665	128	19.2	46	0	0.0	224	167	76.4
South Tyneside and Sunderland NHS Foundation Trust	542	140	25.8	43	0	0.0	218	117	55.2
Southend University Hospital NHS Foundation Trust	1426	231	16.2	89	6	7.3	504	346	69.2
Stockport NHS Foundation Trust	601	89	14.8	52	3	5.9	236	183	77.1
The Christie NHS Foundation Trust	N/A	N/A	N/A	10	2	15.8	15	8	44.4
The Newcastle upon Tyne Hospitals NHS Foundation Trust	912	205	22.5	100	0	0.0	353	238	64.4
The Princess Alexandra Hospital NHS Trust	356	45	12.6	17	0	0.0	137	85	67.2
The Royal Bournemouth and Christchurch Hospitals NHS Foundation Trust	766	92	12.0	69	4	5.7	308	206	69.0
The Royal Marsden NHS Foundation Trust	1015	147	14.5	65	2	3.1	349	250	69.1
University College London Hospitals NHS Foundation Trust	787	78	9.9	25	1	3.7	312	215	66.6
University Hospital Southampton NHS Foundation Trust	624	101	16.2	30	0	0.0	295	190	66.0
University Hospitals Birmingham NHS Foundation Trust	1202	206	17.1	79	4	4.8	460	327	72.3
University Hospitals Coventry and Warwickshire NHS Trust	1018	166	16.3	65	2	3.3	435	310	69.3
University Hospitals of Derby and Burton NHS Foundation Trust	567	116	20.5	13	1	7.0	259	196	74.4
University Hospitals of Leicester NHS Trust	992	190	19.2	70	1	1.4	400	279	68.5
University Hospitals of North Midlands NHS Trust	1417	256	18.1	60	3	5.3	577	403	71.1
Wirral University Teaching Hospital NHS Foundation Trust	616	89	14.4	51	5	9.8	283	193	70.8
Summary of recently merged Trusts: Heart of England, RR1, and University Hospitals Birmingham, RRR, merged to become University Hospitals Birmingham NHS Foundation Trust (RRK). Burton, RJE, and Derby, RTG, merged to form University Hospitals of Derby and Burton (RTG). Ipswich Hospital NHS Trust, RGQ, and Colchester Hospital University NHS Foundation Trust, RDE, merged to form East Suffolk and North Essex NHS Foundation Trust (RDE). City Hospitals Sunderland (RLN) and South Tyneside (RE9) merged to become South Tyneside and Sunderland NHS Foundation Trust (RoB).									

Appendix 3: Provider level (specialist MDT) data for performance indicators 4 and 6

Performance indicator 4: Proportion of men with newly diagnosed node positive non-metastatic disease or metastatic disease who receive docetaxel in combination with ADT.

Performance indicator 6: Proportion of men having radical radiotherapy for high-risk disease receiving a brachytherapy boost.

Specialist MDT	No. men with N+ M0	No. men who received docetaxel	Adjusted rate (%)	No. men with M1	No. men who received docetaxel	Adjusted rate (%)	No. men with high-risk/locally advanced prostate cancer who received RT	No. men who received a brachytherapy boost	Adjusted rate (%)
Overall	1821	253	13.9	6085	1634	26.9	6974	333	4.8
Barking, Havering and Redbridge University Hospitals NHS Trust	18	3	15.2	35	9	26.5	66	1	1.5
Barts Health NHS Trust	27	7	19.1	74	22	28.5	57	0	0.0
Bradford Teaching Hospitals NHS Foundation Trust	39	2	4.9	114	22	22.0	176	4	2.3
Brighton and Sussex University Hospitals NHS Trust	29	3	11.7	87	28	31.4	180	11	5.6
Cambridge University Hospitals NHS Foundation Trust	65	12	20.5	192	33	19.0	294	1	0.3
East Kent Hospitals University NHS Foundation Trust	24	1	4.5	95	7	9.0	79	0	0.0
East and North Hertfordshire NHS Trust	25	4	17.1	120	31	25.2	175	75	39.5
Gloucestershire Hospitals NHS Foundation Trust	33	7	22.2	109	36	29.2	117	0	0.0
Guy's and St Thomas' NHS Foundation Trust	49	11	17.3	104	35	25.9	163	0	0.0
Hull University Teaching Hospitals NHS Trust	50	4	9.1	194	42	21.6	214	106	3.1
Imperial College Healthcare NHS Trust	57	10	15.9	139	27	21.5	136	6	4.5
Lancashire Teaching Hospitals NHS Foundation Trust	32	11	35.2	186	55	29.3	223	0	0.0
Leeds Teaching Hospitals NHS Trust	27	4	14.9	107	39	34.2	113	2	1.6
Manchester University NHS Foundation Trust	27	10	35.0	129	34	25.3	151	0	0.0
Medway NHS Foundation Trust	34	2	5.7	112	22	23.1	188	8	4.0
Mid Yorkshire Hospitals NHS Trust	19	5	24.4	69	22	29.2	69	0	0.0
Norfolk and Norwich University Hospitals NHS Foundation Trust	49	3	6.8	110	28	25.3	166	0	0.0
North Bristol NHS Trust	43	4	9.5	204	50	27.9	214	28	13.8
Northampton General Hospital NHS Trust	26	3	9.7	62	24	34.6	55	0	0.0
Nottingham University Hospitals NHS Trust	32	4	12.7	149	39	26.5	160	2	1.2
Oxford University Hospitals NHS Foundation Trust	45	4	9.0	154	47	28.4	118	3	2.4
Plymouth Hospitals NHS Trust	17	2	10.4	132	42	34.5	114	0	0.0
Portsmouth Hospitals NHS Trust	32	9	30.2	94	20	22.0	83	1	1.4
Royal Berkshire NHS Foundation Trust	26	1	3.6	45	11	19.7	55	0	0.0
Royal Devon and Exeter NHS Foundation Trust	52	7	14.1	190	53	31.6	236	44	20.7
Royal Liverpool and Broadgreen University Hospitals NHS Trust	35	1	2.8	149	22	13.6	111	1	0.9
Royal Surrey County Hospital NHS Foundation Trust	106	12	12.0	297	78	24.7	420	8	2.0
Salford Royal NHS Foundation Trust	19	1	5.3	82	21	24.7	109	3	2.6
Sheffield Teaching Hospitals NHS Foundation Trust	96	14	14.0	271	88	32.3	265	0	0.0
South Tees Hospitals NHS Foundation Trust	35	10	31.3	128	48	38.8	96	2	2.1
South Tyneside and Sunderland NHS Foundation Trust	28	4	11.9	140	26	19.7	64	0	0.0
Southend University Hospital NHS Foundation Trust	61	9	15.8	231	76	32.0	232	55	24.7

Specialist MDT	No. men with N+ M0	No. men who received docetaxel	Adjusted rate (%)	No. men with M1	No. men who received docetaxel	Adjusted rate (%)	No. men with high-risk/locally advanced prostate cancer who received RT	No. men who received a brachytherapy boost	Adjusted rate (%)
Stockport NHS Foundation Trust	25	3	11.8	89	19	18.3	146	2	1.2
The Newcastle upon Tyne Hospitals NHS Foundation Trust	63	4	5.8	205	49	24.5	129	2	1.5
The Princess Alexandra Hospital NHS Trust	19	5	31.2	45	13	31.0	68	12	19.4
The Royal Bournemouth and Christchurch Hospitals NHS Foundation Trust	29	1	4.1	92	25	30.2	130	1	0.7
The Royal Marsden NHS Foundation Trust	47	11	23.7	147	43	23.7	147	0	0.0
University College London Hospitals NHS Foundation Trust	32	8	23.0	78	28	30.4	121	17	15.5
University Hospital Southampton NHS Foundation Trust	30	2	8.1	101	24	21.8	93	2	2.1
University Hospitals Birmingham NHS Foundation Trust	52	6	11.0	206	74	36.2	211	0	0.0
University Hospitals Coventry and Warwickshire NHS Trust	50	8	16.5	166	57	36.4	225	0	0.0
University Hospitals of Derby and Burton NHS Foundation Trust	46	5	11.2	116	45	36.6	118	0	0.0
University Hospitals of Leicester NHS Trust	55	7	13.5	190	46	27.0	219	31	14.2
University Hospitals of North Midlands NHS Trust	77	3	4.1	256	50	21.0	325	1	0.3
Wirral University Teaching Hospital NHS Foundation Trust	37	5	12.7	89	24	29.0	143	3	2.3
Summary of recently merged Trusts: Heart of England, RRI, and University Hospitals Birmingham, RRI, merged to become University Hospitals Birmingham NHS Foundation Trust (RRI). Burton, RJI, and Derby, RTG, merged to form University Hospitals of Derby and Burton (RTG). Ipswich Hospital NHS Trust, RGQ, and Colchester Hospital University NHS Foundation Trust, RDE, merged to form East Suffolk and North Essex NHS Foundation Trust (RDE). City Hospitals Sunderland (RLN) and South Tyneside (RE9) merged to become South Tyneside and Sunderland NHS Foundation Trust (RoB).									

Appendix 4: Provider level (radiotherapy centre) data for performance indicator 5.

Performance indicator 5: Proportion of men having radical radiotherapy for intermediate - or high-risk disease receiving a hypofractionated regimen.

RT Trust	No. men who received RT (intermediate-risk)	No. men who received a hypofractionated regimen	Adjusted rate (%)	No. men who received RT (high-risk)	No. men who received a hypofractionated regimen	Adjusted rate (%)
Overall	3457	3152	91.3	6966	4106	59.0
Barking, Havering and Redbridge University Hospitals NHS Trust	49	44	89.9	68	22	32.6
Barts Health NHS Trust	34	33	97.3	57	24	43.1
Brighton and Sussex University Hospitals NHS Trust	57	56	98.2	240	191	79.9
Cambridge University Hospitals NHS Foundation Trust	110	109	99.0	200	182	91.8
East Suffolk and North Essex NHS Foundation Trust	76	51	67.1	82	24	29.1
East and North Hertfordshire NHS Trust	151	151	99.9	272	244	90.2
Gloucestershire Hospitals NHS Foundation Trust	55	48	87.2	121	41	33.9
Guy's and St Thomas' NHS Foundation Trust	99	85	85.9	167	75	45.0
Hampshire Hospitals NHS Foundation Trust	16	16	99.9	32	19	57.6
Hull University Teaching Hospitals NHS Trust	84	79	94.1	162	106	65.7
Imperial College Healthcare NHS Trust	36	23	64.0	67	7	10.5
Lancashire Teaching Hospitals NHS Foundation Trust	99	74	74.7	222	62	28.1
Leeds Teaching Hospitals NHS Trust	161	160	99.4	420	374	89.4
Maidstone and Tunbridge Wells NHS Trust	80	76	95.0	262	136	51.8
Norfolk and Norwich University Hospitals NHS Foundation Trust	78	49	62.8	189	21	11.1
North Cumbria University Hospitals NHS Trust	28	28	99.9	30	30	98.8
North Middlesex University Hospital NHS Trust	51	49	96.1	77	30	38.2
North West Anglia NHS Foundation Trust	52	51	98.1	76	65	86.4
Northampton General Hospital NHS Trust	38	35	92.1	58	31	54.6
Nottingham University Hospitals NHS Trust	85	66	77.7	155	42	27.4
Oxford University Hospitals NHS Foundation Trust	131	122	93.0	136	36	26.4
Plymouth Hospitals NHS Trust	11	11	100.0	40	21	52.4
Poole Hospital NHS Foundation Trust	63	62	98.4	132	115	87.4
Portsmouth Hospitals NHS Trust	71	70	98.5	146	102	69.0
Royal Berkshire NHS Foundation Trust	48	48	99.9	100	85	84.0
Royal Cornwall Hospitals NHS Trust	12	5	41.7	63	21	33.6
Royal Devon and Exeter NHS Foundation Trust	64	61	95.2	142	76	52.8
Royal Free London NHS Foundation Trust	43	41	95.4	52	26	49.9
Royal Surrey County Hospital NHS Foundation Trust	117	104	88.7	195	91	46.1
Royal United Hospitals Bath NHS Foundation Trust	41	40	97.5	68	50	72.8
Sheffield Teaching Hospitals NHS Foundation Trust	99	95	96.0	258	80	31.0
Shrewsbury and Telford Hospital NHS Trust	11	7	63.6	108	9	8.2
South Tees Hospitals NHS Foundation Trust	76	73	96.1	128	76	59.0
Southend University Hospital NHS Foundation Trust	72	61	84.7	92	58	63.6
Taunton and Somerset NHS Foundation Trust	47	47	100.0	70	39	55.5

RT Trust	No. men who received RT (intermediate-risk)	No. men who received a hypofractionated regimen	Adjusted rate (%)	No. men who received RT (high-risk)	No. men who received a hypofractionated regimen	Adjusted rate (%)
The Christie NHS Foundation Trust	173	173	100.1	421	421	100.9
The Clatterbridge Cancer Centre NHS Foundation Trust	118	118	100.1	253	160	63.2
The Newcastle upon Tyne Hospitals NHS Foundation Trust	48	48	100.1	139	108	78.5
The Royal Marsden NHS Foundation Trust	79	76	96.2	151	66	43.4
The Royal Wolverhampton NHS Trust	82	72	87.8	151	75	49.7
Torbay and South Devon NHS Foundation Trust	25	23	92.1	49	20	39.9
United Lincolnshire Hospitals NHS Trust	90	69	76.7	110	60	54.8
University College London Hospitals NHS Foundation Trust	17	2	11.8	52	27	52.9
University Hospital Southampton NHS Foundation Trust	39	37	94.8	103	87	84.4
University Hospitals Birmingham NHS Foundation Trust	147	144	98.1	188	161	85.6
University Hospitals Bristol NHS Foundation Trust	55	51	92.7	113	62	54.7
University Hospitals Coventry and Warwickshire NHS Trust	35	35	99.9	119	110	92.8
University Hospitals of Derby and Burton NHS Foundation Trust	58	51	87.9	112	29	25.6
University Hospitals of Leicester NHS Trust	39	28	71.8	113	23	20.4
University Hospitals of North Midlands NHS Trust	63	62	98.4	104	75	70.7
Worcestershire Acute Hospitals NHS Trust	44	33	75.0	101	11	10.8
Summary of recently merged Trusts: Heart of England, RR1, and University Hospitals Birmingham, RRR, merged to become University Hospitals Birmingham NHS Foundation Trust (RRK). Burton, RJF, and Derby, RTG, merged to form University Hospitals of Derby and Burton (RTG). Ipswich Hospital NHS Trust, RGQ, and Colchester Hospital University NHS Foundation Trust, RDE, merged to form East Suffolk and North Essex NHS Foundation Trust (RDE). City Hospitals Sunderland (RLN) and South Tyneside (RE9) merged to become South Tyneside and Sunderland NHS Foundation Trust (RoB).						

Appendix 5: Provider level (surgical centre) data for the performance indicator 7.

Performance indicator 7: Proportion of patients who had an emergency readmission within 90 days of radical prostate cancer surgery.

RP Trust	No. men who received RP	No. men who had an emergency readmission within 90 days of RP	Adjusted rate (%)
Overall	7186	1011	14.1
Abertawe Bro Morgannwg University Health Board	30	9	32.7
Aneurin Bevan University Health Board	30	6	19.6
Betsi Cadwaladr University Health Board	13	3	23.3
Bradford Teaching Hospitals NHS Foundation Trust	165	37	22.5
Buckinghamshire Healthcare NHS Trust	61	5	8.0
Cambridge University Hospitals NHS Foundation Trust	186	19	10.3
Cardiff and Vale University Health Board	101	8	8.7
East Kent Hospitals University NHS Foundation Trust	183	40	21.0
East Lancashire Hospitals NHS Trust	63	11	17.6
East Suffolk and North Essex NHS Foundation Trust	63	8	12.6
East Sussex Healthcare NHS Trust	101	21	20.7
East and North Hertfordshire NHS Trust	168	28	17.6
Gloucestershire Hospitals NHS Foundation Trust	138	18	13.2
Guy's and St Thomas' NHS Foundation Trust	277	19	7.1
Heart of England NHS Foundation Trust	101	25	23.8
Hull University Teaching Hospitals NHS Trust	174	18	10.2
Imperial College Healthcare NHS Trust	128	14	11.3
Lancashire Teaching Hospitals NHS Foundation Trust	78	15	19.7
Leeds Teaching Hospitals NHS Trust	109	10	8.9
Manchester University NHS Foundation Trust	39	6	15.2
Medway NHS Foundation Trust	123	18	14.9
Mid Yorkshire Hospitals NHS Trust	74	18	23.0
Norfolk and Norwich University Hospitals NHS Foundation Trust	155	22	14.2
North Bristol NHS Trust	218	36	16.0
Nottingham University Hospitals NHS Trust	102	13	13.4
Oxford University Hospitals NHS Foundation Trust	181	39	21.9
Plymouth Hospitals NHS Trust	103	11	10.2
Portsmouth Hospitals NHS Trust	117	10	8.3
Royal Berkshire NHS Foundation Trust	151	33	22.4
Royal Devon and Exeter NHS Foundation Trust	172	23	13.1
Royal Liverpool and Broadgreen University Hospitals NHS Trust	121	8	6.8
Royal Surrey County Hospital NHS Foundation Trust	322	29	9.0
Royal United Hospitals Bath NHS Foundation Trust	51	9	17.5
Sheffield Teaching Hospitals NHS Foundation Trust	278	40	13.7
Shrewsbury and Telford Hospital NHS Trust	74	23	29.6

RP Trust	No. men who received RP	No. men who had an emergency readmission within 90 days of RP	Adjusted rate (%)
South Tees Hospitals NHS Foundation Trust	100	13	13.0
South Tyneside and Sunderland NHS Foundation Trust	76	14	18.4
Southend University Hospital NHS Foundation Trust	67	9	12.8
St George's University Hospitals NHS Foundation Trust	127	15	12.4
Stockport NHS Foundation Trust	102	9	9.0
The Christie NHS Foundation Trust	97	6	6.4
The Newcastle upon Tyne Hospitals NHS Foundation Trust	191	21	10.9
The Royal Bournemouth and Christchurch Hospitals NHS Foundation Trust	136	23	17.4
The Royal Marsden NHS Foundation Trust	190	11	6.0
The Royal Wolverhampton NHS Trust	143	19	13.5
United Lincolnshire Hospitals NHS Trust	12	2	16.7
University College London Hospitals NHS Foundation Trust	573	58	9.9
University Hospital Southampton NHS Foundation Trust	161	24	14.2
University Hospitals Birmingham NHS Foundation Trust	118	20	17.0
University Hospitals Coventry and Warwickshire NHS Trust	132	23	17.5
University Hospitals of Derby and Burton NHS Foundation Trust	132	20	14.9
University Hospitals of Leicester NHS Trust	133	14	10.9
University Hospitals of North Midlands NHS Trust	67	15	23.2
Wirral University Teaching Hospital NHS Foundation Trust	92	13	14.3
Worcestershire Acute Hospitals NHS Trust	87	23	25.3
Summary of recently merged Trusts: Heart of England, RRI, and University Hospitals Birmingham, RRI, merged to become University Hospitals Birmingham NHS Foundation Trust (RRI). Burton, RJI, and Derby, RTG, merged to form University Hospitals of Derby and Burton (RTG). Ipswich Hospital NHS Trust, RGQ, and Colchester Hospital University NHS Foundation Trust, RDE, merged to form East Suffolk and North Essex NHS Foundation Trust (RDE). City Hospitals Sunderland (RLN) and South Tyneside (RE9) merged to become South Tyneside and Sunderland NHS Foundation Trust (RoB).			

Appendix 6: Provider level (surgical centre) data for the performance indicator 8.

Performance indicator 8: Proportion of patients experiencing at least one severe genitourinary (GU) complication within 2 years of radical prostatectomy.

RP Trust	No. men who received RP	No. men who experienced at least one GU complication	Adjusted rate (%)
Overall	5403	464	8.6
Abertawe Bro Morgannwg University Health Board	18	1	5.5
Aneurin Bevan University Health Board	20	2	9.5
Barking, Havering and Redbridge University Hospitals NHS Trust	22	3	13.3
Betsi Cadwaladr University Health Board	48	5	10.4
Bradford Teaching Hospitals NHS Foundation Trust	107	14	13.3
Buckinghamshire Healthcare NHS Trust	34	1	2.9
Cambridge University Hospitals NHS Foundation Trust	158	15	9.7
Cardiff and Vale University Health Board	156	16	10.9
East Kent Hospitals University NHS Foundation Trust	160	25	15.1
East Lancashire Hospitals NHS Trust	46	8	17.7
East Suffolk and North Essex NHS Foundation Trust	88	6	6.8
East Sussex Healthcare NHS Trust	78	6	7.5
East and North Hertfordshire NHS Trust	137	11	8.6
Gloucestershire Hospitals NHS Foundation Trust	88	11	12.2
Guy's and St Thomas' NHS Foundation Trust	189	3	1.6
Heart of England NHS Foundation Trust	98	6	6.0
Hull University Teaching Hospitals NHS Trust	125	6	4.6
Imperial College Healthcare NHS Trust	100	11	11.4
Lancashire Teaching Hospitals NHS Foundation Trust	51	5	9.5
Leeds Teaching Hospitals NHS Trust	105	6	5.6
Manchester University NHS Foundation Trust	54	15	27.1
Medway NHS Foundation Trust	102	10	10.1
Mid Yorkshire Hospitals NHS Trust	55	6	10.4
Norfolk and Norwich University Hospitals NHS Foundation Trust	113	6	5.2
North Bristol NHS Trust	224	16	7.0
Nottingham University Hospitals NHS Trust	64	4	6.8
Oxford University Hospitals NHS Foundation Trust	83	9	11.0
Plymouth Hospitals NHS Trust	59	3	4.7
Portsmouth Hospitals NHS Trust	89	1	1.1
Royal Berkshire NHS Foundation Trust	81	5	6.1
Royal Devon and Exeter NHS Foundation Trust	151	11	7.4
Royal Liverpool and Broadgreen University Hospitals NHS Trust	133	8	6.2
Royal Surrey County Hospital NHS Foundation Trust	200	14	7.1
Royal United Hospitals Bath NHS Foundation Trust	38	2	5.6
Sheffield Teaching Hospitals NHS Foundation Trust	173	16	9.0

RP Trust	No. men who received RP	No. men who experienced at least one GU complication	Adjusted rate (%)
Shrewsbury and Telford Hospital NHS Trust	35	8	21.9
South Tees Hospitals NHS Foundation Trust	80	6	7.8
South Tyneside and Sunderland NHS Foundation Trust	81	12	14.9
Southend University Hospital NHS Foundation Trust	16	2	12.1
St George's University Hospitals NHS Foundation Trust	105	7	6.8
Stockport NHS Foundation Trust	87	15	17.4
The Christie NHS Foundation Trust	97	9	9.8
The Newcastle upon Tyne Hospitals NHS Foundation Trust	115	8	6.9
The Royal Bournemouth and Christchurch Hospitals NHS Foundation Trust	110	11	9.8
The Royal Marsden NHS Foundation Trust	136	11	8.1
The Royal Wolverhampton NHS Trust	99	2	2.0
United Lincolnshire Hospitals NHS Trust	13	1	7.7
University College London Hospitals NHS Foundation Trust	260	18	6.8
University Hospital Southampton NHS Foundation Trust	103	4	3.7
University Hospitals Birmingham NHS Foundation Trust	123	7	5.6
University Hospitals Coventry and Warwickshire NHS Trust	140	9	6.4
University Hospitals of Derby and Burton NHS Foundation Trust	48	4	8.6
University Hospitals of Leicester NHS Trust	80	6	7.7
University Hospitals of North Midlands NHS Trust	46	3	6.7
Wirral University Teaching Hospital NHS Foundation Trust	76	6	7.6
Worcestershire Acute Hospitals NHS Trust	106	15	13.4
Summary of recently merged Trusts: Heart of England, RRI, and University Hospitals Birmingham, RRI, merged to become University Hospitals Birmingham NHS Foundation Trust (RRI). Burton, RIF, and Derby, RTG, merged to form University Hospitals of Derby and Burton (RTG). Ipswich Hospital NHS Trust, RGQ, and Colchester Hospital University NHS Foundation Trust, RDE, merged to form East Suffolk and North Essex NHS Foundation Trust (RDE). City Hospitals Sunderland (RLN) and South Tyneside (RE9) merged to become South Tyneside and Sunderland NHS Foundation Trust (RoB).			

Appendix 7: Provider level (radiotherapy centre) data for the performance indicator 9.

Performance indicator 9: Proportion of patients experiencing at least one severe gastrointestinal (GI) complication within 2 years of radical external beam radiotherapy.

RT Trust	No. men who received RT	No. men who experienced at least one GI complication	Adjusted rate (%)
Overall	11220	1171	10.4
Abertawe Bro Morgannwg University Health Board	180	23	12.5
Barking, Havering and Redbridge University Hospitals NHS Trust	128	19	14.5
Barts Health NHS Trust	101	10	10.1
Betsi Cadwaladr University Health Board	141	18	12.4
Brighton and Sussex University Hospitals NHS Trust	262	22	8.6
Cambridge University Hospitals NHS Foundation Trust	286	24	8.7
East Suffolk and North Essex NHS Foundation Trust	180	23	13.0
East and North Hertfordshire NHS Trust	397	38	9.7
Gloucestershire Hospitals NHS Foundation Trust	141	14	10.0
Guy's and St Thomas' NHS Foundation Trust	211	33	15.9
Hampshire Hospitals NHS Foundation Trust	55	6	10.6
Hull University Teaching Hospitals NHS Trust	245	24	9.7
Imperial College Healthcare NHS Trust	160	22	13.7
Lancashire Teaching Hospitals NHS Foundation Trust	413	44	10.3
Leeds Teaching Hospitals NHS Trust	428	31	7.4
Maidstone and Tunbridge Wells NHS Trust	423	57	13.4
Norfolk and Norwich University Hospitals NHS Foundation Trust	322	64	20.7
North Cumbria University Hospitals NHS Trust	56	4	6.9
North Middlesex University Hospital NHS Trust	140	23	16.1
North West Anglia NHS Foundation Trust	115	6	5.5
Northampton General Hospital NHS Trust	112	10	9.2
Nottingham University Hospitals NHS Trust	245	24	10.0
Oxford University Hospitals NHS Foundation Trust	346	14	4.1
Plymouth Hospitals NHS Trust	65	4	6.2
Poole Hospital NHS Foundation Trust	201	18	9.0
Portsmouth Hospitals NHS Trust	248	31	12.5
Royal Berkshire NHS Foundation Trust	188	6	3.1
Royal Cornwall Hospitals NHS Trust	48	6	12.7
Royal Devon and Exeter NHS Foundation Trust	154	21	13.2
Royal Free London NHS Foundation Trust	93	12	12.0
Royal Surrey County Hospital NHS Foundation Trust	375	51	13.4
Royal United Hospitals Bath NHS Foundation Trust	111	15	13.9
Sheffield Teaching Hospitals NHS Foundation Trust	347	55	16.2
Shrewsbury and Telford Hospital NHS Trust	88	18	20.5
South Tees Hospitals NHS Foundation Trust	234	22	9.2

RT Trust	No. men who received RT	No. men who experienced at least one GI complication	Adjusted rate (%)
Southend University Hospital NHS Foundation Trust	95	8	9.0
Taunton and Somerset NHS Foundation Trust	100	5	5.0
The Christie NHS Foundation Trust	485	59	12.1
The Clatterbridge Cancer Centre NHS Foundation Trust	430	17	3.9
The Newcastle upon Tyne Hospitals NHS Foundation Trust	261	18	7.2
The Royal Marsden NHS Foundation Trust	294	28	9.3
The Royal Wolverhampton NHS Trust	206	15	7.3
Torbay and South Devon NHS Foundation Trust	62	16	25.4
United Lincolnshire Hospitals NHS Trust	174	23	12.8
University College London Hospitals NHS Foundation Trust	50	10	19.5
University Hospital Southampton NHS Foundation Trust	122	22	17.9
University Hospitals Birmingham NHS Foundation Trust	451	30	6.5
University Hospitals Bristol NHS Foundation Trust	142	9	6.1
University Hospitals Coventry and Warwickshire NHS Trust	171	13	7.7
University Hospitals of Derby and Burton NHS Foundation Trust	166	20	12.3
University Hospitals of Leicester NHS Trust	144	15	10.8
University Hospitals of North Midlands NHS Trust	174	21	12.3
Velindre Cancer Centre	328	22	6.4
Worcestershire Acute Hospitals NHS Trust	125	7	5.6
Summary of recently merged Trusts: Heart of England, RRI, and University Hospitals Birmingham, RRI, merged to become University Hospitals Birmingham NHS Foundation Trust (RRK). Burton, RIF, and Derby, RTG, merged to form University Hospitals of Derby and Burton (RTG). Ipswich Hospital NHS Trust, RGQ, and Colchester Hospital University NHS Foundation Trust, RDE, merged to form East Suffolk and North Essex NHS Foundation Trust (RDE). City Hospitals Sunderland (RLN) and South Tyneside (RE9) merged to become South Tyneside and Sunderland NHS Foundation Trust (RoB).			

Responses from Trusts with a confirmed ‘case to answer’ during the NPCA Outlier Process¹

Surgical centres

Performance indicator 7: Proportion of patients who had an emergency readmission with 90 days of radical prostate cancer surgery.

Shrewsbury and Telford Hospital NHS Trust

Performance indicator 8: Proportion of patients experiencing at least one severe genitourinary (GU) complication with 2 years of radical prostatectomy.

Manchester University NHS Foundation Trust

Radiotherapy centres

Performance indicator 9: Proportion of patients experiencing at least one severe gastrointestinal (GI) complication with 2 years of radical radiotherapy.

Norfolk & Norwich University Hospitals NHS Foundation Trust

Sheffield Teaching Hospitals NHS Foundation Trust

Torbay & South Devon NHS Foundation Trust

¹ <https://www.npca.org.uk/resources/npca-outlier-policy-2019/>

Response from Shrewsbury and Telford Hospital NHS Trust

Performance indicator 7: *Proportion of patients who had an emergency readmission with 90 days of radical prostate cancer surgery.*

Thank you for your letter and sharing your audit. We have relooked at the audit and database you sent. We informed you that A&E and SAU attendances were included in your re-admission calculation. We also noticed that the cohort of patients you audited were patients who had radical prostatectomy between 1st April 2017 and 31st March 2018. They were not patients who were diagnosed with prostate cancer between 1st April 2017 and 31st March 2018 and subsequently had radical prostatectomy.

However, we did have a period of increased 28 day readmissions in 2017-18 which was recognized in 2018 as we monitor our readmissions. Various measures have been introduced since then. These include earlier catheter removal, changing the way bladder neck is handled during surgery and modifying the criteria used for lymph node dissection. Re-admission rates have reduced following these measures. This was confirmed in our internal audit we shared with you in October 2019. CHKS dataset also supports this and I enclose an output which I am sure is available to you as well.

We will be moving our prostatectomies to a centralized centre in 2020 as part of GIRFT initiative. This will hopefully improve our outcome further.

Response from Manchester University NHS Foundation Trust

Performance indicator 8: *Proportion of patients experiencing at least one severe genitourinary (GU) complication with 2 years of radical prostatectomy.*

Response 1

Thank you for your letter regarding our prostate cancer practice for the year 2016. Owing to the short notice given to us and the complex nature of our prostate cancer pathway with multiple providers, we have been unable to robustly validate the data. We accept your findings as such. As a Trust we no longer provide the treatment aspect of the prostate cancer pathway. Therefore this is historical data for a service that we no longer provide.

Response 2

I have been asked to reply on behalf of MFT to your letter raising concerns about genitourinary tract complications following radical prostatectomy. As you are aware this is no longer a procedure which is undertaken within this organisation but we realise that there may be learning which applies to other areas of surgical practice.

In order to understand the issues raised by your enquiry I have asked the urology department to undertake a case note review of all the affected patients [...] and will seek to correlate the clinical characteristics of the patients with the occurrence of adverse outcomes. We will also seek to ascertain any underlying identifiable clinical risk factors associated with the development of these adverse outcomes.

I would normally have expected a review of this sort and scope to be complete by the end of January. However, as you may appreciate, the operations in question were performed by an MFT surgeon operating on patients of another Trust as part of a waiting list initiative at a local private hospital. This will make it substantially more difficult for us to obtain the relevant clinical information and so would suggest that this deadline be extended to the end of March to facilitate this information gathering.

It goes without saying that we will share the results of our investigation with you when it is complete I trust that this gives you sufficient reassurance that we are taking this alert seriously and that we have a framework in place which will enable us to understand what has happened and learn lessons from it which will benefit patient care in the future.

Response from Norfolk & Norwich University Hospitals NHS Foundation Trust

Performance indicator 9: Proportion of patients experiencing at least one severe gastrointestinal (GI) complication with 2 years of radical radiotherapy.

Thank you very much for informing us that the NNUH is a potential outlier for radiation proctitis for the year 2016. We have reviewed the patient level data and note one patient who had radiation proctitis in fact had prostate bed radiotherapy. However we agree that this centre's radiation proctitis rate appears to be 20% and that we are a very significant outlier for this complication.

We suspect the reasons for this are multifactorial. On learning that we were a significant outlier last year we have looked closely at our practice. We benchmarked ourselves against the other radiation oncology centres in the Eastern region. As a result of this we reduced our seminal vesicle dose from 55Gy to 52.5 Gy for the 60Gy 20 fraction prostates. We have reduced the seminal vesicle dose to 60Gy for the 74Gy prostates. We adopted margins of 0.6cm/0.5cm for the prostate and 1cm for the seminal vesicles.

We also looked at our image guidance. All of our patients originally had bony matching with a shift if the CTV was not covered. We retrospectively looked at six patients with radiation proctitis from the 2015 cohort. We looked at rectum positioning on the patients' daily cone beams and found in four out of six patients the dose delivered to the rectum was greater than had been planned. We started soft tissue matching to the CTV on the 22.02.2018. When our current imaging protocol was applied retrospectively to these patients the rectal dose was reduced. We believe that this will have a significant effect on our radiation proctitis rate in future patients.

We have instituted weekly peer review meeting for all clinicians who treat prostate cancer with physics and dosimetry support. We prospectively peer review all of our radical contouring and have adopted ESTRO contouring guidance as well as using available trial atlases. We still use PIVOTAL boost dose constraints for all of our patients. We optimize our plans to reduce the dose to the rectum as much as we can.

We note it takes up to two years to develop radiation proctitis. We fear that we will remain an outlier for radiation proctitis in 2017. We are in the process of organising an external review of our prostate practice to ensure that all of the changes we have instituted are sufficient to reduce our rectal toxicity and to ensure that there are no other factors which have been overlooked.

Response from Sheffield Teaching Hospitals NHS Foundation Trust

Performance indicator 9: Proportion of patients experiencing at least one severe gastrointestinal (GI) complication with 2 years of radical radiotherapy.

The toxicity data relates to men treated in 2016 and since 2016 there have been significant changes in our centre.

For whole pelvis treatment we have changed from 3d conformal planning with doses of 69Gy in 37 fractions (Phase 1 45Gy/25 fractions Phase 2 24Gy/12 fractions as per PRO7) to Rapidarc as standard (74/71/55Gy in 37 fractions with contouring and dose constraints as per the Pivotal trial).

We had already switched to fixed field IMRT for prostate only plans – as per the CHHiP protocol – and we took part in the Eagle trial (led by Prof Staffurth). This involved very intensive investigation of GI toxicity following radical radiotherapy for prostate cancer. This has allowed a robust pathway for the referral of men with GI toxicity in Sheffield for investigation and ongoing management. After investigation by the gastroenterology team not all GI toxicity identified was due to radiotherapy but unrelated diagnoses were found and treated.

We are now routinely collecting PROMs and objective measures of GI and GU toxicity as part of routine follow up after prostate radiotherapy. If the 2016 data does show that Weston Park centre is an outlier in terms of GI toxicity, we expect these measures will show improvement.

Response from Torbay & South Devon NHS Foundation Trust

Performance indicator 9: Proportion of patients experiencing at least one severe gastrointestinal (GI) complication with 2 years of radical radiotherapy.

Thank you for giving us the opportunity to review the 16 patients identified with a diagnosis of proctitis on the Torbay 2016 NPCA data. A full clinical review has been carried out on 14/16 patients identified. 2 patients had their investigations at the RD&E Hospital. Of these 2 patients, 1 had a diagnosis of radiation proctitis and was treated accordingly. 1 patient was diagnosed with mild radiation telangiectasia and discharged.

We identified 94 patients who received radical radiotherapy (EBRT) during this period, not including patients post RALP. Of these, 23 had a HDR prostate boost and so are excluded from this audit. This will skew our results, as we use a HDR boost in significantly more men than most other centres ie $23/94 = 24\%$. This clearly affects the denominator for this audit, as patients not selected for HDR boost may have other co-morbidities which could increase the likelihood of radiation proctitis. However, I do not think this the reason for our outlier status.

Following my initial investigation of the 16 patients identified by the audit the Gastroenterology team also reviewed the clinical notes, endoscopy reports and photographs of 14 patients. They confirmed that 1 patient can be confirmed as having radiation proctitis. In addition, they verified that proctitis and radiation telangiectasia have been used interchangeably, on the sigmoidoscopy reports, and this is where the fault has arisen with our Trust. A diagnosis of proctitis has been recorded on the sigmoidoscopy, when in fact radiation telangiectasia should have been recorded.

Our Gastroenterologist has confirmed that only one of the 14 patients had active inflammation at the time of sigmoidoscopy, and required treatment for it. This diagnostic error is being addressed with the Endoscopy clinical team and clinical coders to avoid further data errors going forward.

We have taken this opportunity to review the radiotherapy technique and dose fractionation used for the 16 patients you identified. All had either 5/7 field IMRT or VMAT and daily Cone Beam CT (CBCT) as image guidance. 2 patients were re-planned during treatment on the basis of daily CBCT to ensure a 'best fit' plan.

I'm awaiting the final analysis of rectal dvhs but so far there have been no patients with rectal doses out of tolerance as per the CHHiP Trial.

Of note, although Torbay is one of the smallest radiotherapy centres in the UK, we have been keen to ensure that our radiotherapy matches the high standards of the larger centres. We have done this through participating in clinical trials.

There are 3 other radiotherapy centres in the Peninsula. We were the only centre of the four to be accredited and participate in the CHHiP Trial, (the pivotal prostate radiotherapy study that proved 60Gy in 20 fractions is as safe and effective as 74Gy in 37 fractions). We are also the only centre to be part of the Raider trial - a trial of radical radiotherapy in bladder cancer, which requires treatment radiographers to pass a rigorous externally validated assessment of their use of pelvic CBCT for image guidance.

We were the first centre in the Peninsula to be accredited for the Pivotal Boost trial and have been the 7th highest recruiter nationally to that trial. We have recently submitted and passed the RTQA for the PACE trial of stereotactic radiotherapy in prostate cancer.

All these trials have required review of trial dummy cases, prospective review of the first patients we entered into the trials and random retrospective review. At review, our outlining, planning and CBCT (for Raider) have been externally reviewed and validated. Because of that, I feel we can claim that our radiotherapy is safe and of high quality.

In summary, it does appear that we have been identified as an outlier for GI toxicity following radical pelvic radiotherapy for prostate cancer due to a misdiagnosis and subsequent coding error of proctitis rather than radiation telangiectasia.

Once again thank you for giving us the time to review our data, and the opportunity to correct our sigmoidoscopy diagnoses going forward.